



Political Campaign Software

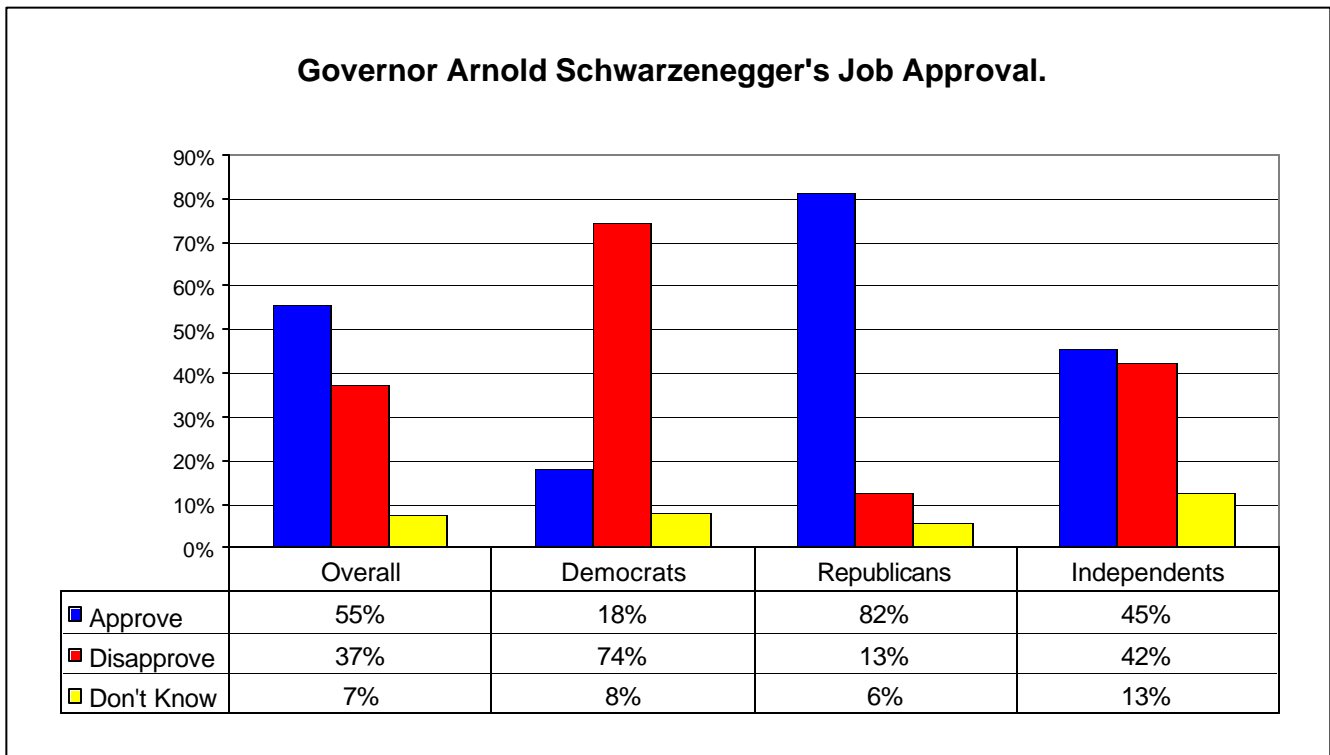
Datamar Survey of San Diego County

Date: October 13, 2005

Contact: Raul Furlong
619-579-8244
www.datamar.com

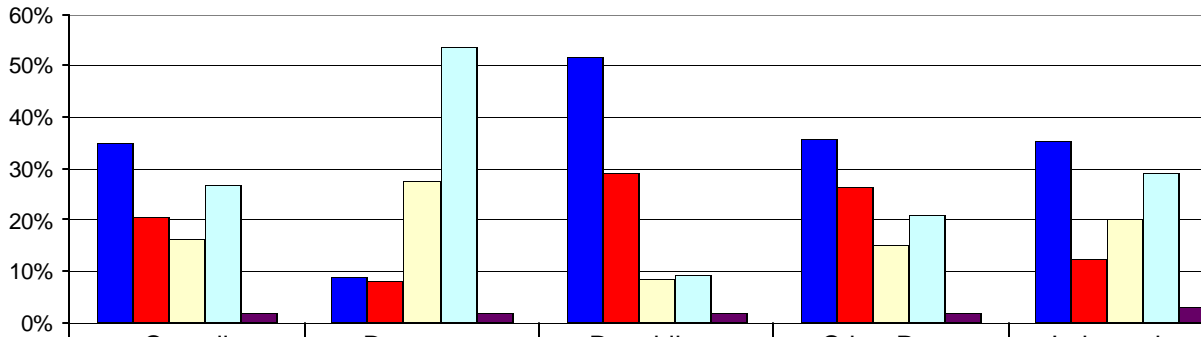
Governor Strong, Legislature Sinks, in Approval Ratings Prop 73,74,75,77 over 50%, Prop 76 Under 50%

San Diego – Governor Arnold Schwarzenegger’s overall approval rating in San Diego County is at 55% in a poll released today by Datamar Inc. The Governor still is polling well with Republicans, with over 82% approving of the job he is doing. Only 18% of Democrats approve of the job he is doing.



When we asked the respondents to rate the Governor when it comes to working for the best interest of people like them, 35% overall thought he was doing an excellent job, 21% a good job, 16% a fair job, and 27% a poor job.

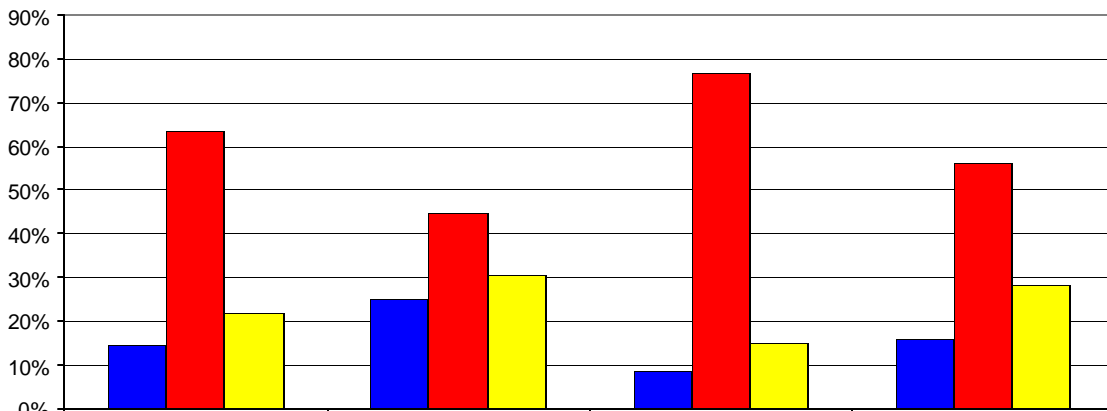
How Would you rate Governor Schwarzenegger when it comes to working for the best interests of people like you?



	Overall	Democrat	Republican	Other Party	Independent
Excellent	35%	9%	52%	36%	35%
Good	21%	8%	29%	26%	12%
Fair	16%	28%	8%	15%	20%
Poor	27%	54%	9%	21%	29%
Don't know	2%	2%	2%	2%	3%

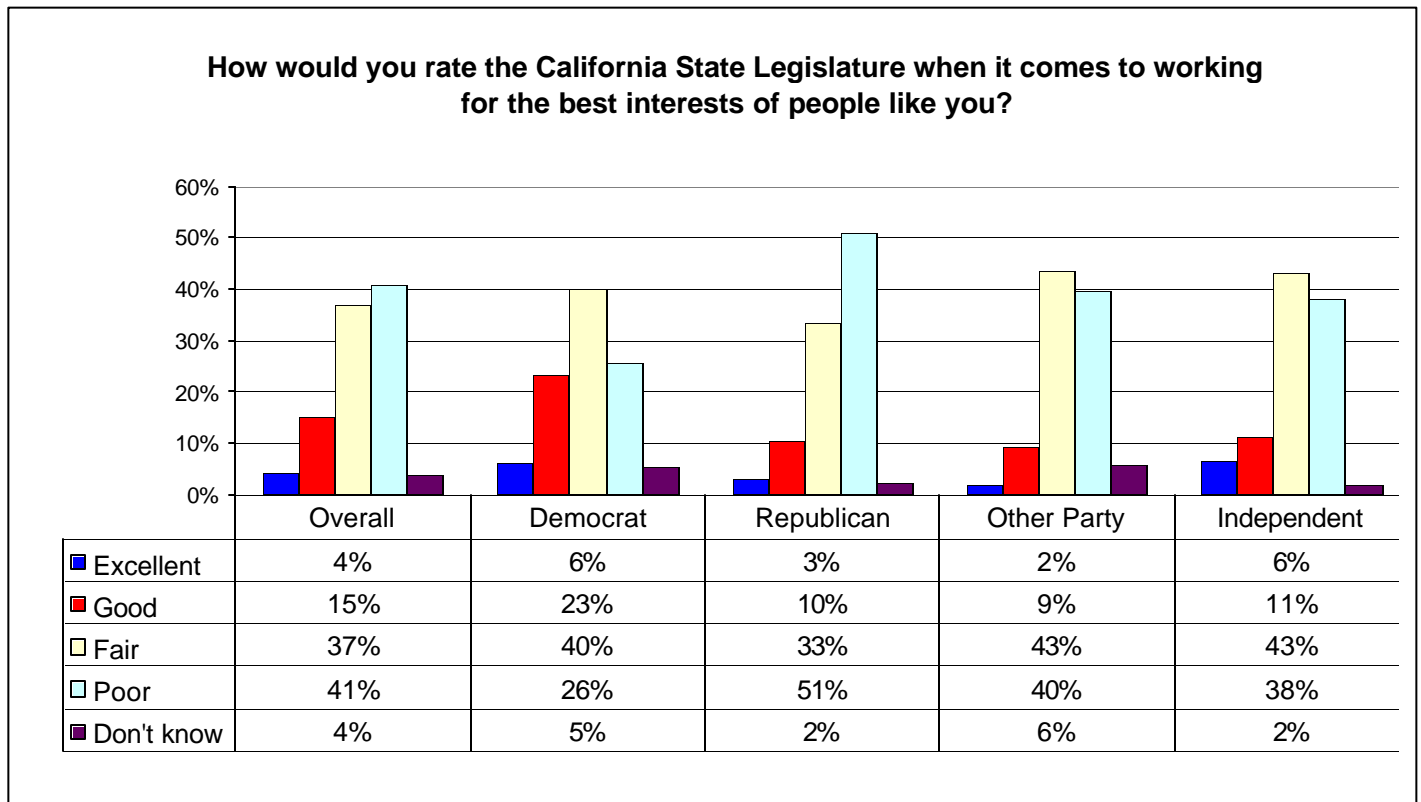
Governor Schwarzenegger's approval rating soars in comparison to the approval rating for the State Legislature. A mere 15% approve of the job the legislators are doing, with 63% disapproving. Among Democrats, only 25% approve of the State Legislature's job performance, while only 9% of Republicans approve.

State Legislature Job Approval



	Overall	Democrats	Republicans	Independents
Approve	15%	25%	9%	16%
Disapprove	63%	45%	77%	56%
Don't Know	22%	31%	15%	28%

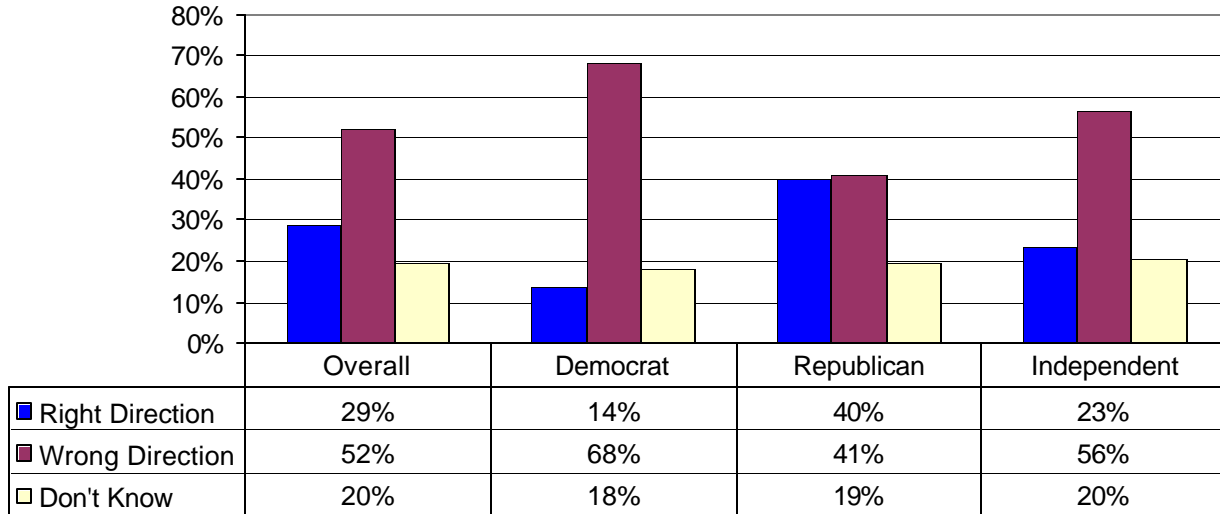
When respondents were asked to rate the California legislature’s ability to work for the best interest of people like them, only 4% overall rated it as excellent while 15% rated it good. 37% rated it fair, and 41% rated it poor. Very few Democrats, 6%, thought the legislature was doing an excellent job while Republicans echoed this negative belief at 3%.



“Both Democrats and Republicans feel the California Legislature is doing a poor job, while the Governor’s approval rating comes down along party lines.” noted Richard Babcock of Datamar.

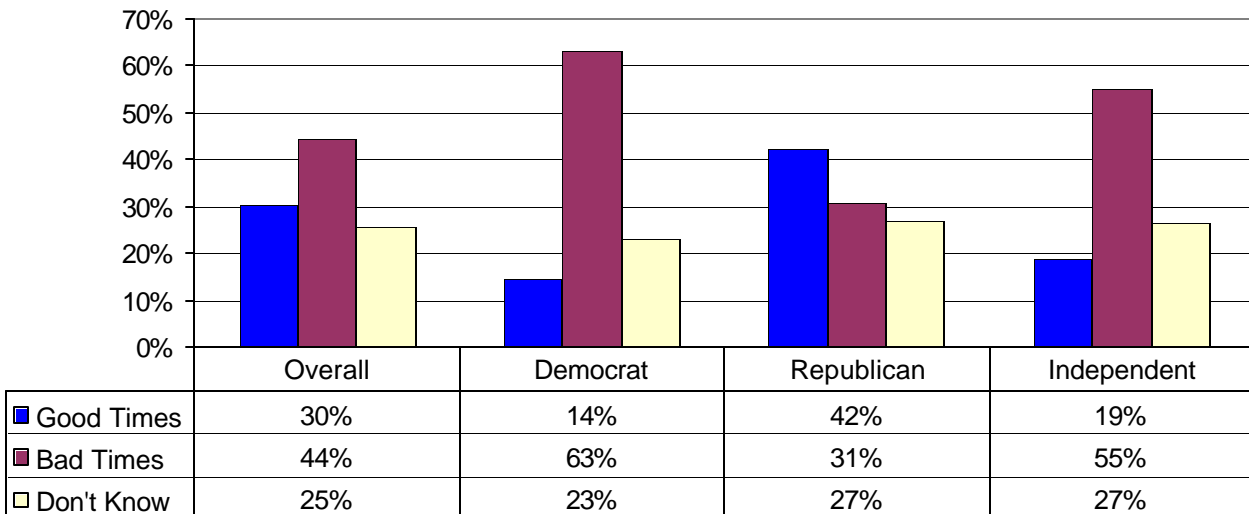
The voters in San Diego County are generally pessimistic when it comes to the direction of California. Overall, only 29% think the state is going in the right direction, while 52% think it is going in the wrong direction. Republicans, 40%, are somewhat more optimistic than Democrats, 14%, on the direction of California. 68% of Democrats and 41% of Republicans think California is heading in the wrong direction.

Do you think things in California are generally going in the right direction or the wrong direction?

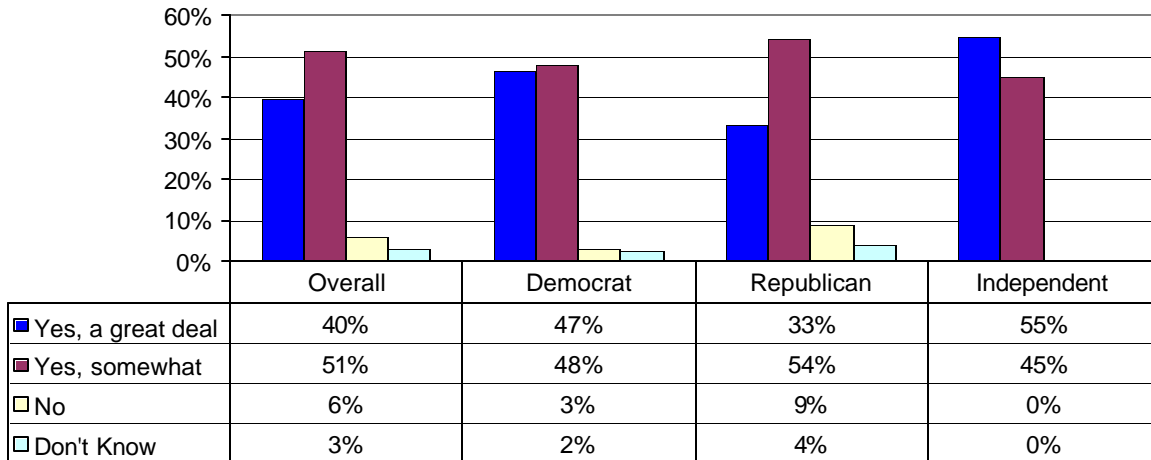


When asked about the economic condition for the next year, only 30% overall felt that California is heading for good times financially, while 44% felt that we are heading for bad times. Republicans again are somewhat more optimistic, with 42% thinking we are heading for good times. Only 14% of Democrats think that way. Among Democrats, 63% think we are heading for bad times. Only 31% of Republicans think that way.

Do you think that during the next 12 months we will have good times financially or bad times in the state of California?



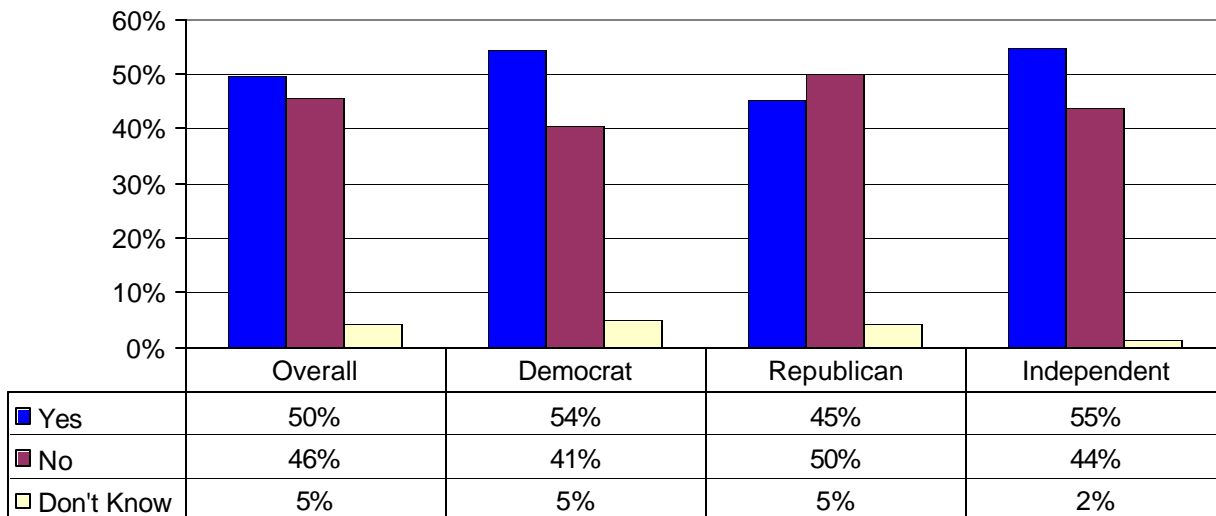
During the next 6 months, do you think the price of gasoline will hurt the California economy?



The rise in gas prices has been a large contributor to the negative impression of the economy, with 91% thinking that gas prices will hurt the state's economy a great deal or somewhat. This lopsided belief is found among Democrats, Republicans, and Independents.

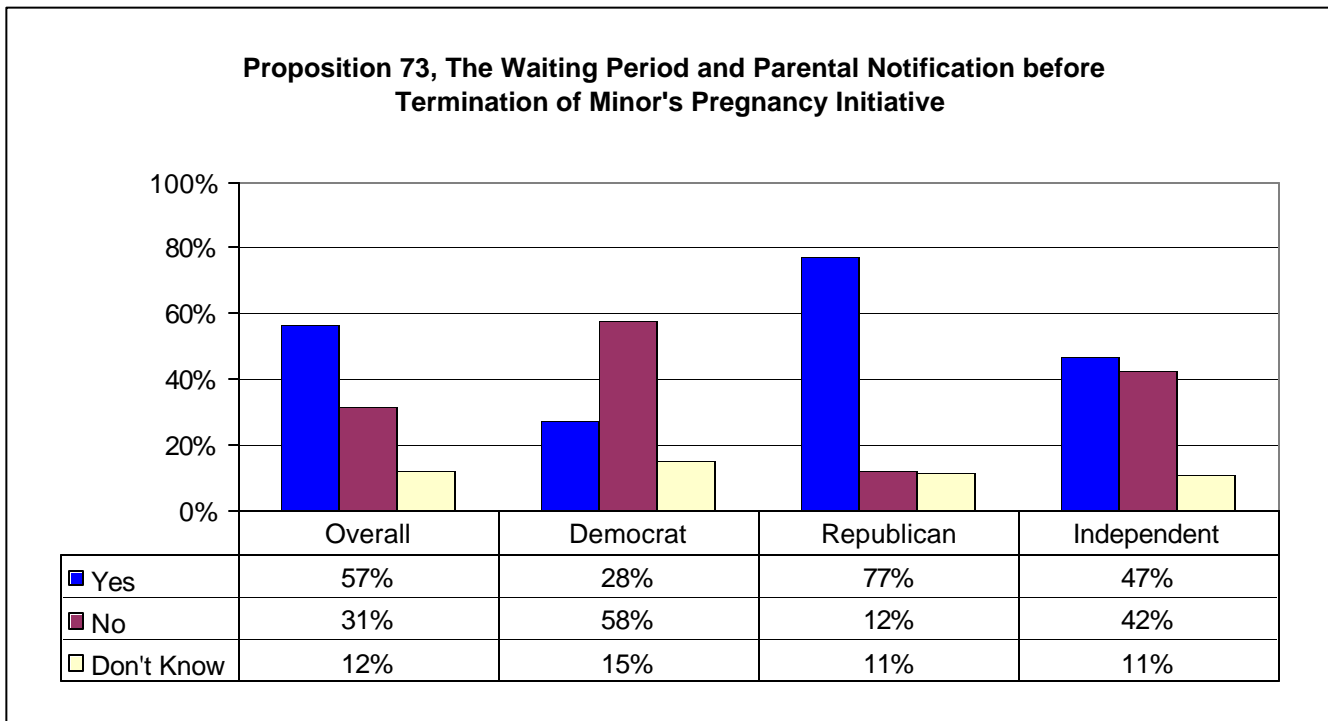
The rise in gas prices has hurt many people on a personal level. Overall 50% stated that increased gas prices have caused financial hardship in their household, with 54% of Democrats and 45% of Republicans experiencing financial hardship

Have recent price increases in gasoline caused any financial hardship for you or your household?

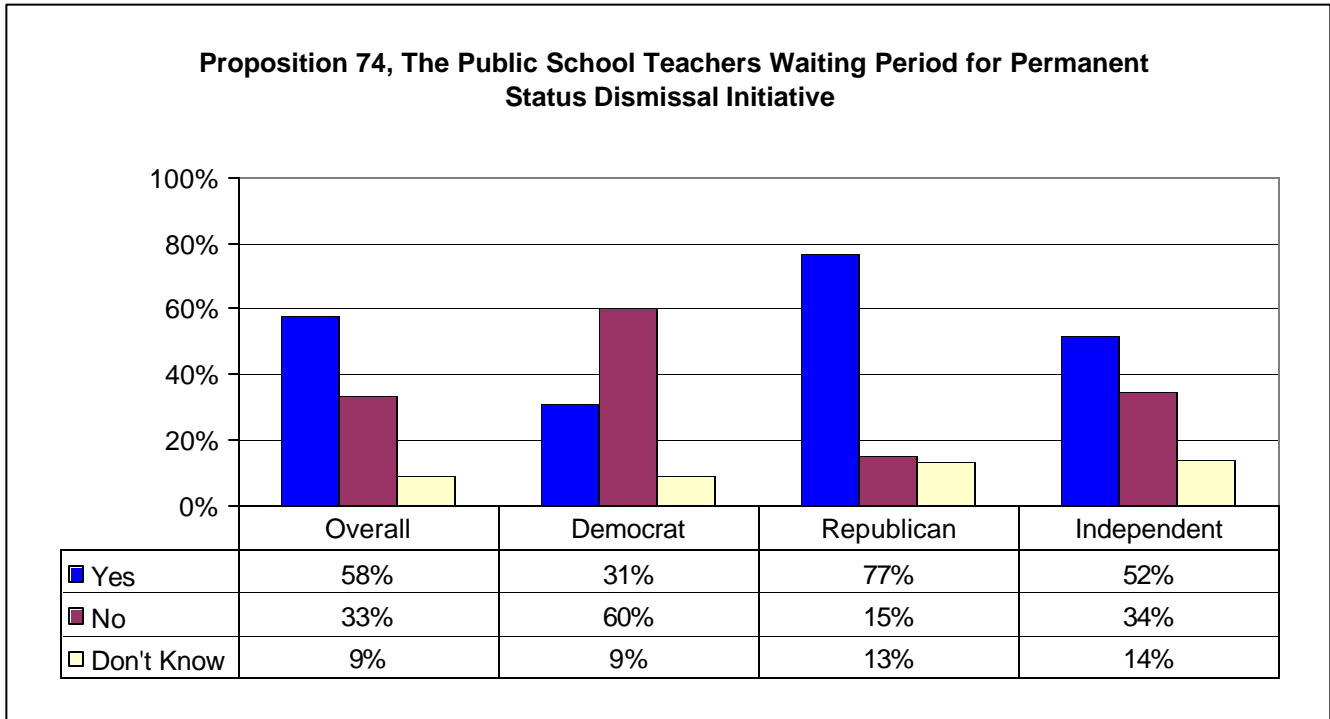


Initiatives

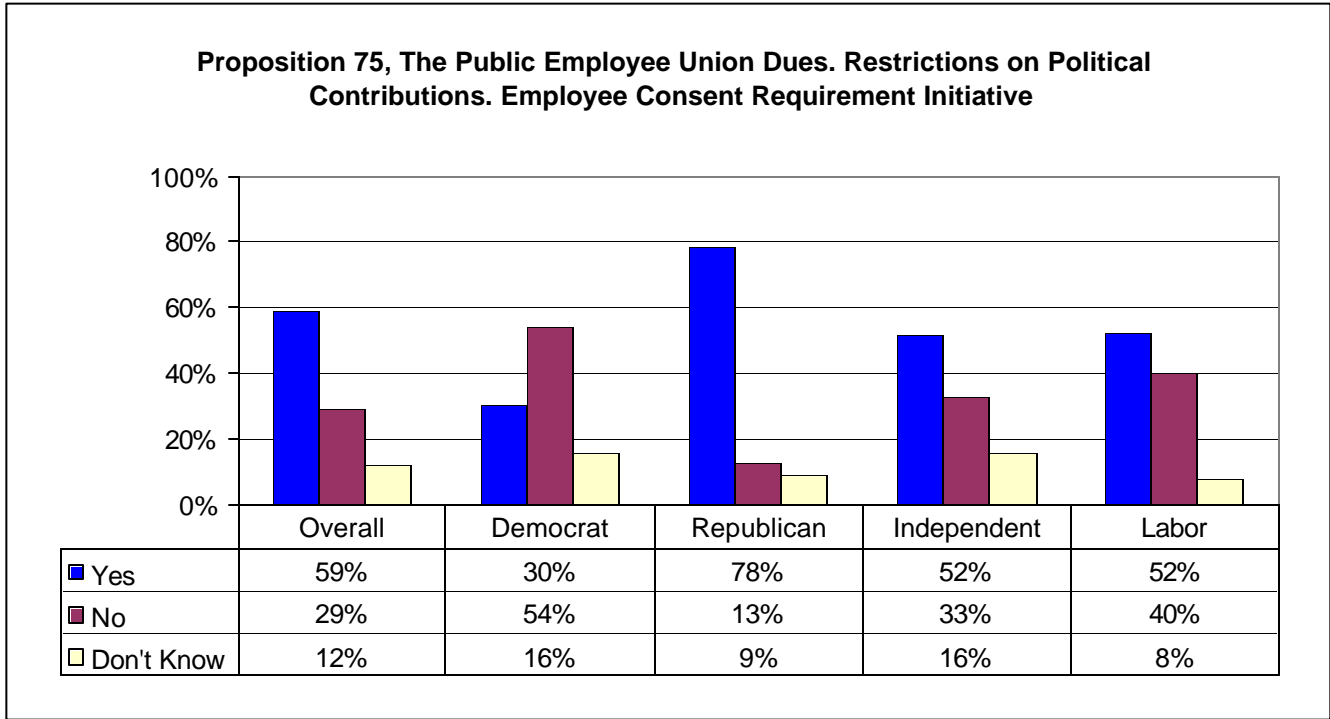
Proposition 73, is the “Waiting Period and Parental Notification before Termination on Minor’s Pregnancy Initiative.” It would require physicians to notify the parent or legal guardian of a pregnant minor at least 48 hours before termination of pregnancy. It is supported by 57% overall of San Diego County voters, with 31% opposing. Republicans strongly support the initiative with 77%. Democrats’ support is only 28%.



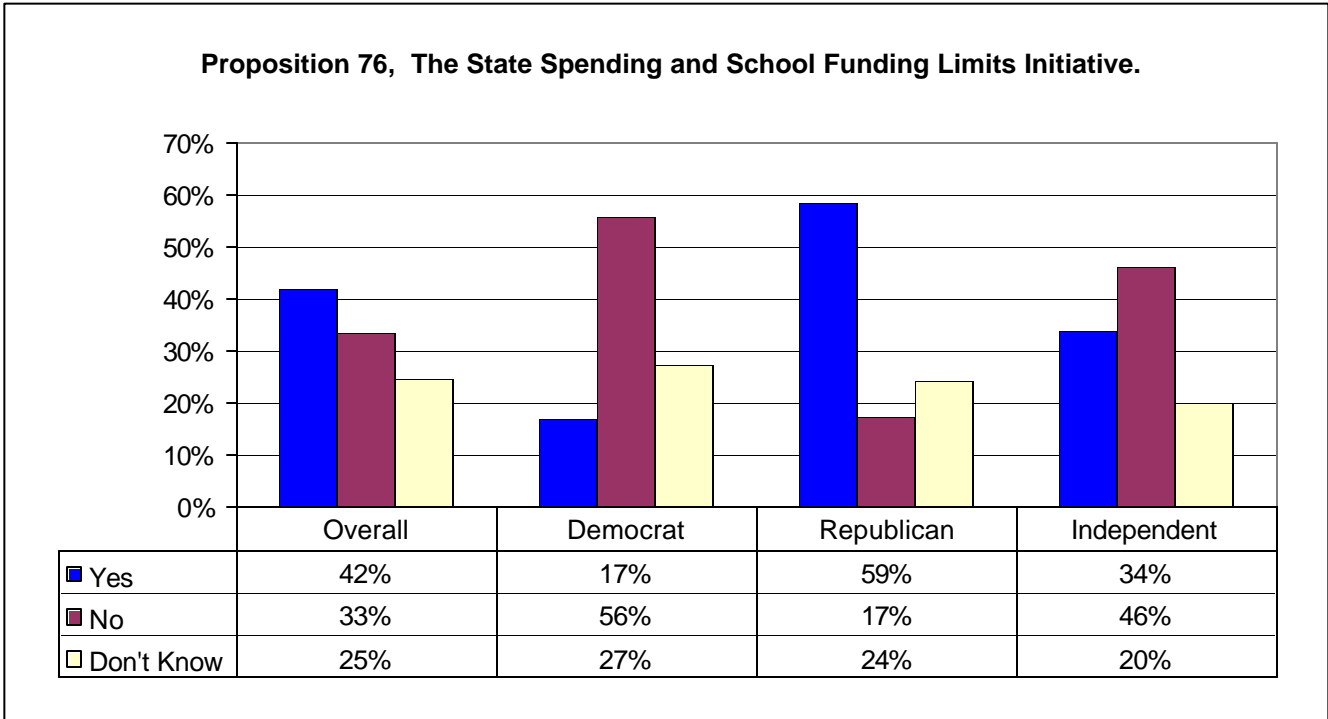
Proposition 74 is the “Public School Teachers Waiting Period for Permanent Status Dismissal Initiative.” It would increase the length of time required before a teacher becomes a permanent employee from two complete consecutive school years to five. Overall, 58% approve and 33% disapprove. Among Republicans, this initiative has strong support, 77%, to only 31% for Democrats.



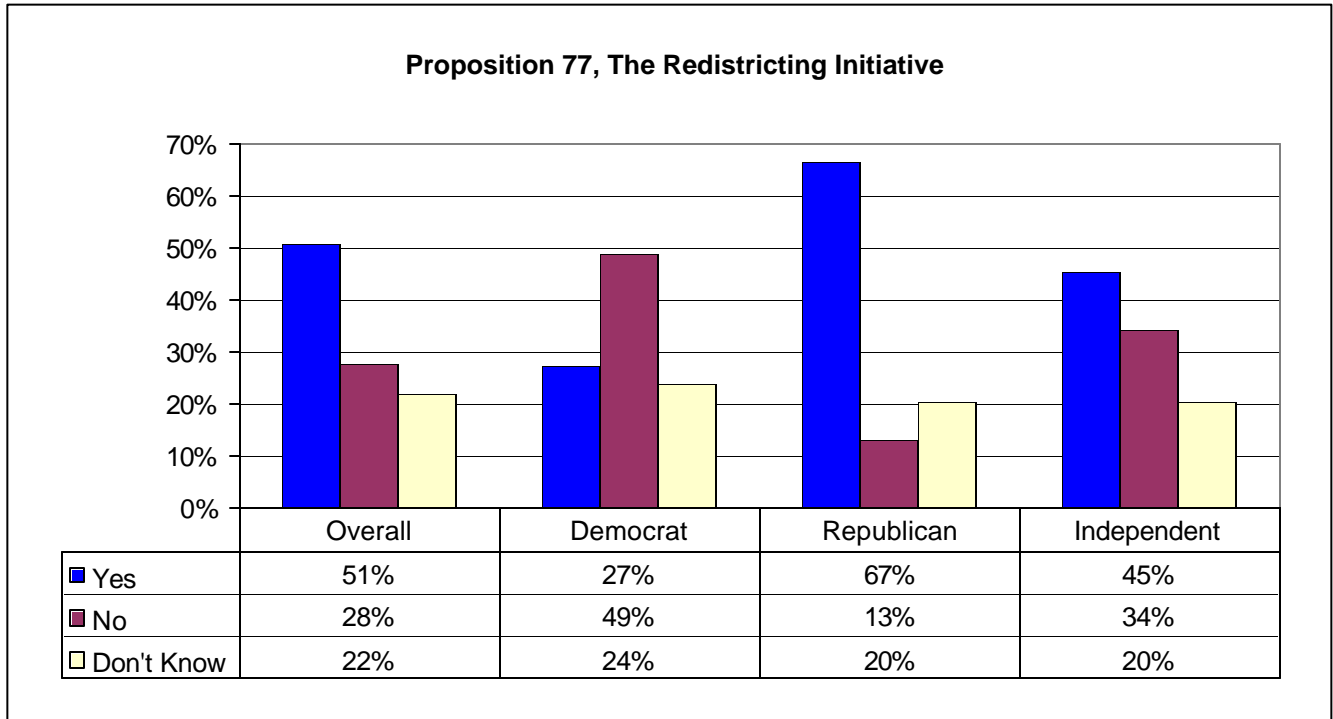
Proposition 75, is the “Public Employee Union Dues. Restriction on Political Contributions. Employee Consent Requirement Initiative.” It prohibits the use by public employee labor organizations of public employee dues or fees for political contribution except with the prior consent of individual public employees each year on a specified written form. Overall, this proposition is leading 59% to 29%, with Republicans supporting the proposition 78%, Democrats 30%. Remarkably, support among labor union households is 52% with 40% opposing.



Proposition 76 is the “State Spending and School Funding Limits Initiative.” It limits state spending to prior year levels plus the average revenue growth of the previous years. It also changes the minimum school funding requirements under proposition 98, and eliminates repayment requirement when minimum funding suspended. This proposition is ahead in the poll with 42% supporting and 33% opposing. Republicans are the big supporters, with 59% supporting. Only 17% of Democrats support.



Proposition 77 is the “Redistricting Initiative.” It amends the process for redistricting California’s Senate, Assembly, Congressional and Board of Equalization districts. It requires a panel of three retired judges, selected by legislative leaders, to adopt a new redistricting plan if measure passes, and after each national census. Overall, this initiative is supported by 51% of the voters and opposed by 28%. Republicans strongly support this initiative with 67% in favor, only 13% opposed. Among Democrats 27%, favor, 49% oppose.



About the Survey

The Survey is a project of Datamar, Inc. Datamar, Inc. offers online tools for political candidates and committees that help organize the basic information for a successful campaign including: Surveys, Voter Contact Information, Voter Demographic Information, Legislative Races and Proposition Results. Datamar, also provides voter contact and GOTV phone services.

Findings are based on a telephone survey of 927 San Diego high-propensity registered voters. Registered voters polled are those who voted in the 2004 primary and general elections. These voters were interviewed on October 7 through October 9, 2005. Interviews took place using a proprietary algorithm to generate a random sample of voters. The sampling error for the total sample is +/- 3.2 percent at the 95 percent confidence level. The sampling error for subgroups is larger.

Surveys are available from our website at: www.datamar.com

DATAMAR, INC.

October 12, 2005

Survey Toplines

Sample size 927

+/- 3.2 sampling error

October 7, 8,9, 2005

High-propensity registered San Diego County voters

Q1. Are you a registered voter in the County of San Diego?

Yes	100%
No	
Don't Know	

Q2. Overall, do you approve or disapprove of the way that Arnold Schwarzenegger is handling his job as Governor of California?

Approve	55%
Disapprove	37%
Don't know	7%

Q3. How would you rate Governor Schwarzenegger when it comes to working for the best interests of people like you—excellent, good, fair, or poor?

Excellent	35%
Good	21%
Fair	16%
Poor	27%
Don't know	2%

Q4. Overall, do you approve or disapprove of the way that the California legislature is handling its job?

Approve	15%
Disapprove	63%
Don't know	22%

Q5. How would you rate the California legislature when it comes to working for the best interests of people like you—excellent, good, fair, or poor?

Excellent	4%
Good	15%
Fair	37%
Poor	41%
Don't know	4%

Q6. Do you think things in California are generally going in the right direction or the wrong direction?

Right direction	29%
Wrong direction	52%
Don't know	20%

Q7. Turning to economic conditions in California, do you think that during the next 12 months we will have good times financially or bad times?

Good times	30%
Bad times	44%
Don't know	25%

Q8. During the next 6 months, do you think the price of gasoline will hurt the California economy or not?

Yes, great deal	40%
Yes, somewhat	51%
No	6%
Don't know	3%

Q9. Have recent price increases in gasoline caused any financial hardship for you or your household?

Yes, caused hardship	50%
No, not caused hardship	46%
Don't know	5%

Q10. Governor Schwarzenegger has called a special election in November 2005 to vote on budget, educational, and governmental reform measures. In general, do you think the special election is a good idea or a bad idea?

Good idea	54%
Bad idea	35%
Neither	6%
Don't know	6%

Q11. How closely are you following news about the special election on November 8th—very closely, fairly closely, not too closely, or not at all closely?

Very closely	35%
Fairly closely	47%
Not too closely	16%
Not at all closely	2%
Don't know	1%

Q12. Proposition 73 is the “Waiting Period and Parental Notification Before Termination of Minor’s Pregnancy” initiative. It requires, with certain exceptions, a physician to notify the parent or legal guardian of a pregnant minor at least 48 hours before performing an abortion involving that minor. If the election were held today, would you vote yes or no on Proposition 73?

Yes	57%
No	31%
Don't know	12%

Q13. Proposition 74 is the “Public School Teachers Waiting Period for Permanent Status Dismissal” initiative. It increases length of time required before a teacher may become a permanent employee from two complete consecutive school years to five complete consecutive school years. If the election were held today, would you vote yes or no on Proposition 74?

Yes	58%
No	33%
Don't know	9%

Q14. Proposition 75 is the “Public Employee Union Dues. Restrictions on Political Contributions. Employee Consent Requirement” initiative. It prohibits the use by public employee labor organizations of public employee dues or fees for political contributions except with the prior consent of individual public employees each year on a specified written form. If the election were held today, would you vote yes or no on proposition 75?

Yes	59%
No	29%
Don't know	12%

Q15. Proposition 76 is the “State Spending and School Funding Limits” initiative. It limits state spending to prior year’s levels plus the average revenue growth of the previous years. It also changes the minimum school funding requirements under proposition 98, and eliminates repayment requirement when minimum funding suspended. If the election were held today would you vote Yes or No on Proposition 76?

Yes	42%
No	33%
Don't know	25%

Q16. Proposition 77 is the “Redistricting Initiative” It amends the process for redistricting California’s Senate, Assembly, Congressional and Board of Equalization districts. It requires a panel of three retired judges, selected by legislative leaders, to adopt a new redistricting plan if measure passes, and after each national census. If the election were held today, would you vote Yes or No on Proposition 77?

Yes	51%
No	28%
Don’t know	22%

Q17. Which of the following best describes you politically?

Very liberal	8%
Somewhat liberal	19%
Middle-of-the-road	25%
Somewhat conservative	29%
Very conservative	18%
Don’t know	2%

Q18. On social issues, what would you say best describes you?

Very liberal	11%
Somewhat liberal	19%
Middle-of-the-road	25%
Somewhat conservative	24%
Very conservative	18%
Don’t know	2%

Q19. On fiscal issues, what would you say best describes you?

Very liberal	4%
Somewhat liberal	12%
Middle-of-the-road	26%
Somewhat conservative	33%
Very conservative	23%
Don’t know	3%

Now, just a few final questions for statistical purposes only --

Q20. Are you?

Male	48%
Female	52%

Q21. What is your age, please?

18-24	2%
25-34	7%
35-44	12%
45-54	21%
55-64	22%
65 or over	37%

Q22. What is the highest level of education you have completed?

Some high school	3%
Graduated high school	11%
Technical/vocational	5%
Some college	26%
Graduated college	35%
Graduate/professional School	21%

Q23. In what political party are you registered to vote?

Democrat	35%
Republican	48%
Another party	5%
No party registration	12%

Q24. Are you or is anyone in your household a member of a labor union, such as trade unions, service employee unions, public employee unions, and teachers unions?

Yes	23%
No	74%
Don't Know	3%

Q25. What do you consider to be your race/ethnic group?

White	56%
Black/African-American	9%
Hispanic/Latino	21%
Asian/Pacific Islander	7%
Other racial/ethnic group	8%