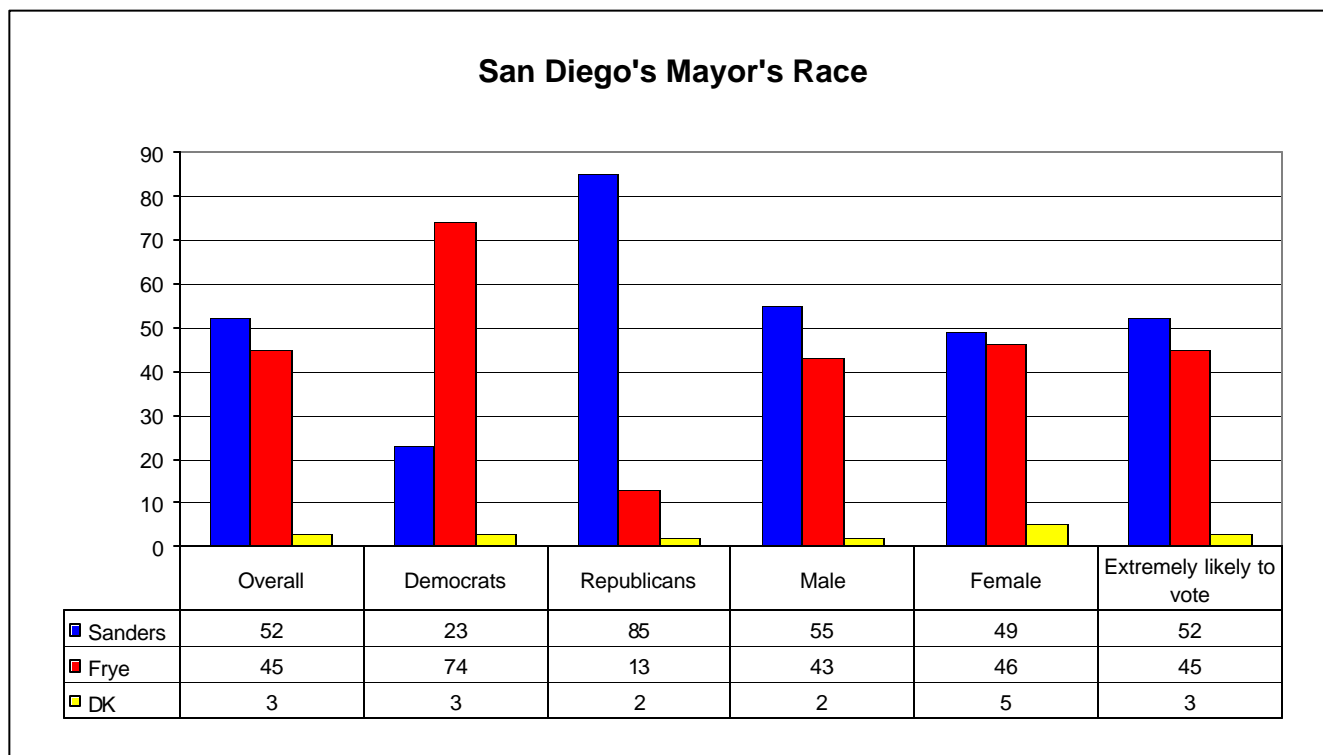


Saturday Datamar Daily Tracking Survey

Date: November 5, 2005
**Contact: Raul Furlong
619-579-8244**

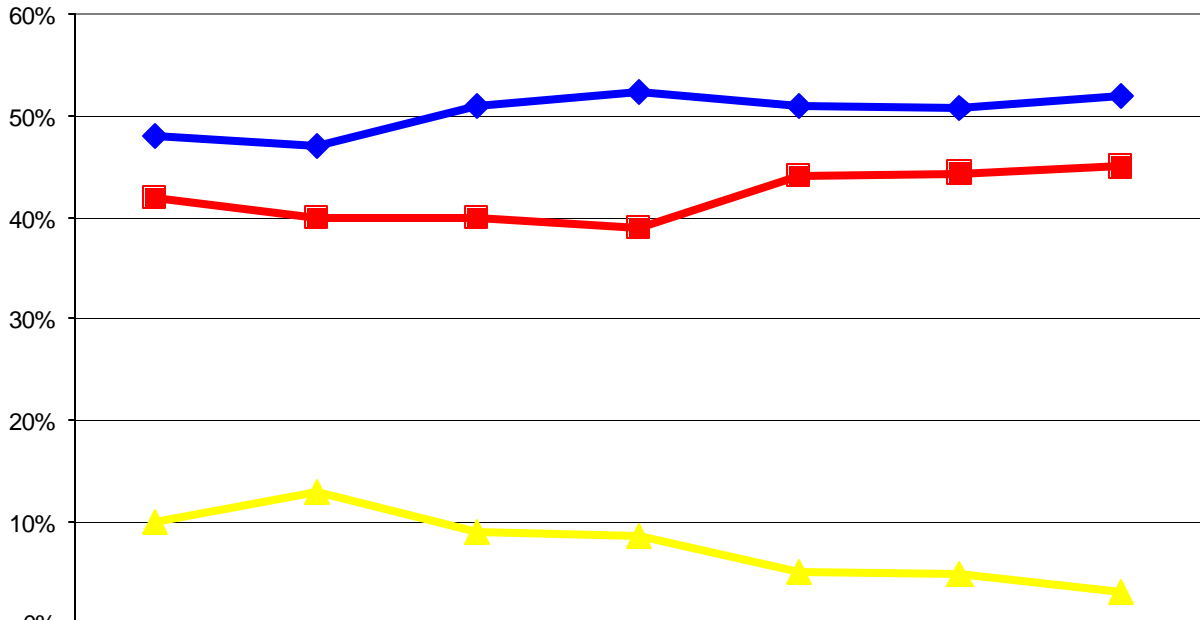
Heading Into The Final Weekend Sanders Maintains His Lead

San Diego – In the tracking poll released today by Datamar Inc., Jerry Sanders retains his lead of 52% to 45% for Donna Frye. Among *City of San Diego high-propensity registered voters*, Sanders' lead has remained the same, 7 points, for the last three daily tracking surveys. In the July 26, 2005 primary election, Frye received 43% and Sanders combined with Steve Francis for 51%. Remarkably, three months later, with campaigns spending expected to exceed \$2 million, what has changed? Very little. Frye now has 45% instead of 43%. Sanders now has 52%, slightly exceeding the July primary Sanders/Francis 51% total.



This non-partisan race remains sharply divided among political parties. Frye leads among Democrats, 74%, to 23% for Sanders. Sanders' lead among Republicans is 85%, to 13% for Frye. Sanders leads with males 55% and with females 49%, while Frye garners support from 43% of males and 46% of females. Of those that stated they were extremely likely to vote, Sanders leads 52% to Frye's 45%.

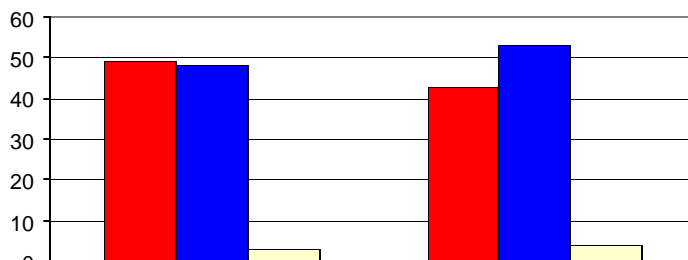
Mayor's Race



	09/15/05	10/05/05	10/20/05	10/26/05	11/2/2005	11/3/2005	11/4/2005
◆ Sanders	48%	47%	51%	52%	51%	51%	52%
■ Frye	42%	40%	40%	39%	44%	44%	45%
▲ DK	10%	13%	9%	9%	5%	5%	3%

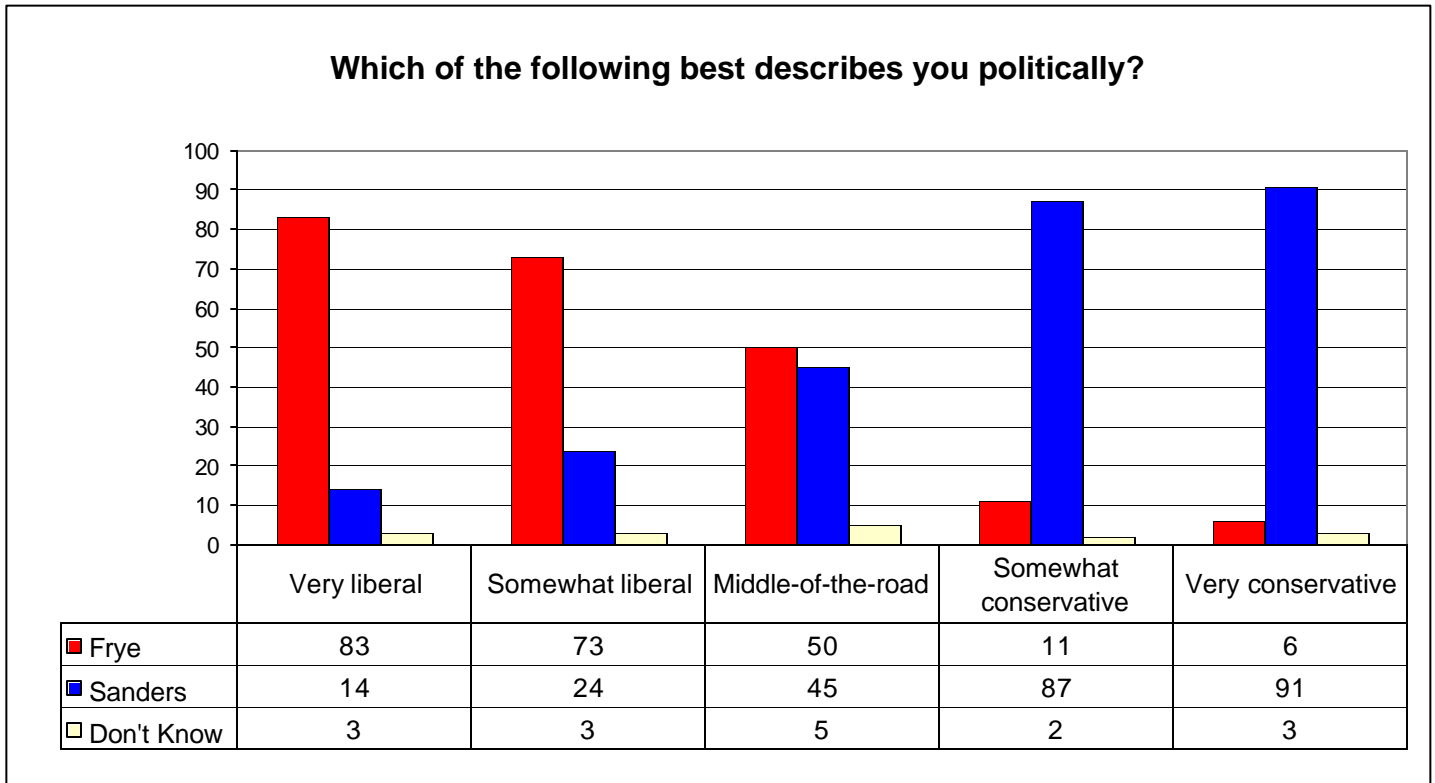
Among labor union households, Frye, 49%, and Sanders, 48%, are in a virtual tie. Among non-labor union households Sanders leads 53% to 43% for Frye.

Labor & Non-Labor Voters

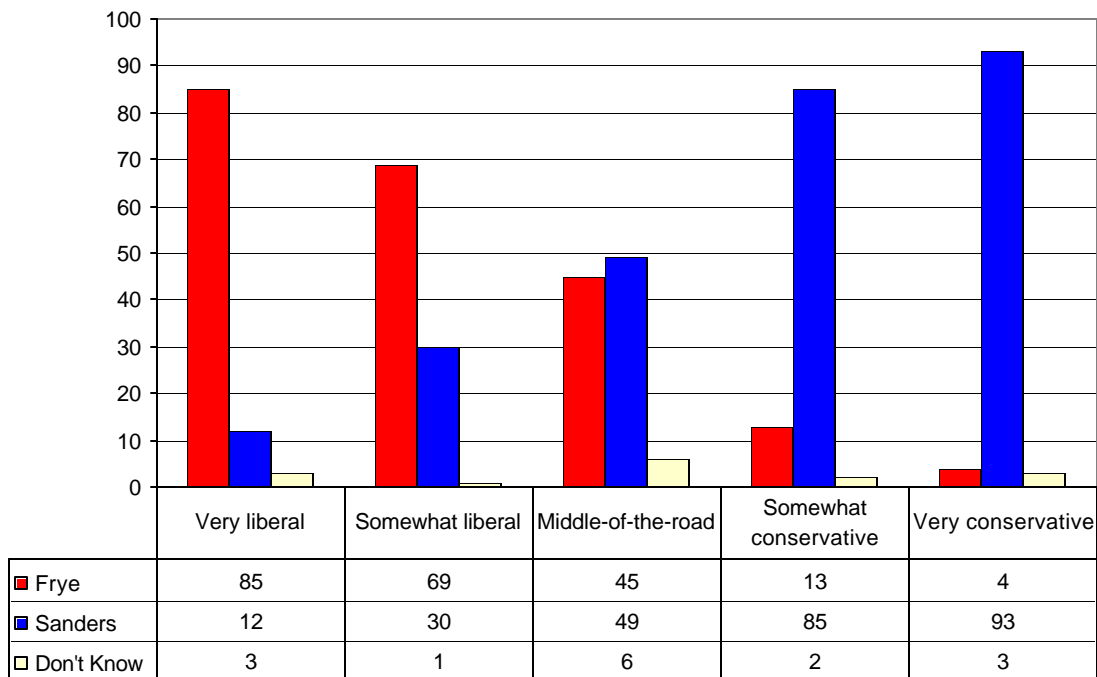


	Labor	Non-Labor
■ Donna Frye	49	43
■ Jerry Sanders	48	53
□ Don't Know	3	4

On political ideology, Frye has a large lead among the very liberal, with 83% to Sanders' 14%. Sanders continues his larger lead among the very conservative, 91% to Frye's 6%.



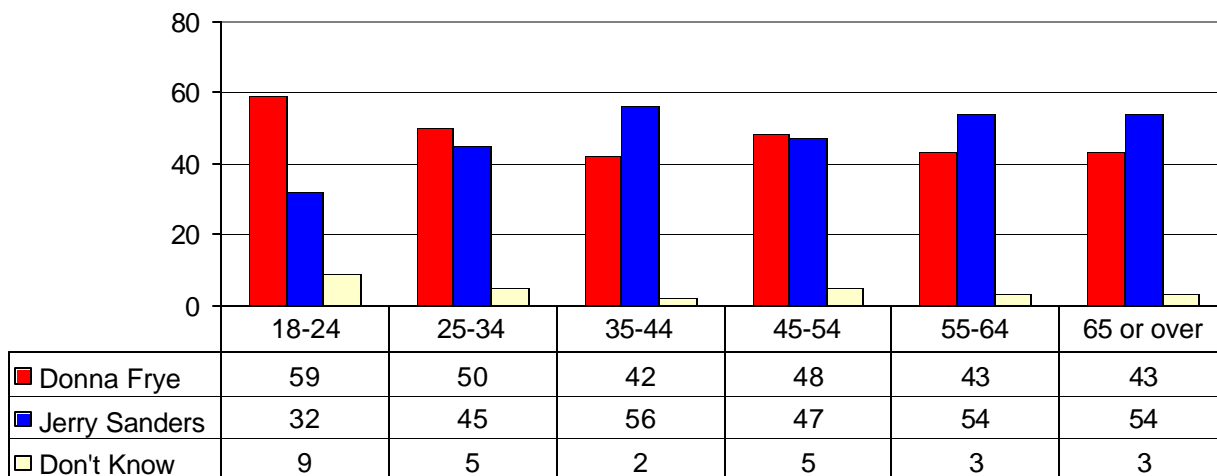
Which of the following best describes you on social issues?



On social issues, both Sanders and Frye have remained solid with their respective bases. Sanders receives support from 93% of social very conservatives while Frye receives 85% from social very liberals. The middle-of-the-road group leans towards Sanders 49% to Frye 45%.

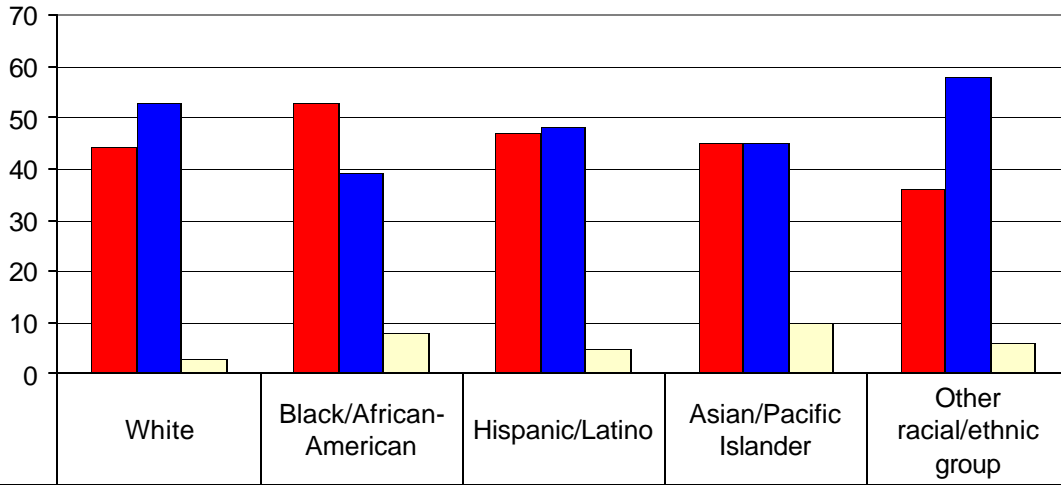
Frye leads with two age groups -- 18-24 year-olds (59%) and 25-34 year-olds (50%). The 45-54 groups is a virtual tie with Frye receiving 48% and Sanders 47%. With the other age groups Sanders leads.

Age Ranges



White voters support Sanders 53% to 44% for Frye. Latinos are split between Frye, 47%, and Sanders, 48%. African-Americans support Frye 53% to 39% for Sanders. Asian/Pacific Islanders are evenly split with both candidates receiving 45%. Other racial/ethnic groups are split with Frye, 36%, and Sanders, 58%. Don't Know responses range from 3% to 10%.

Racial And Ethnic Groups

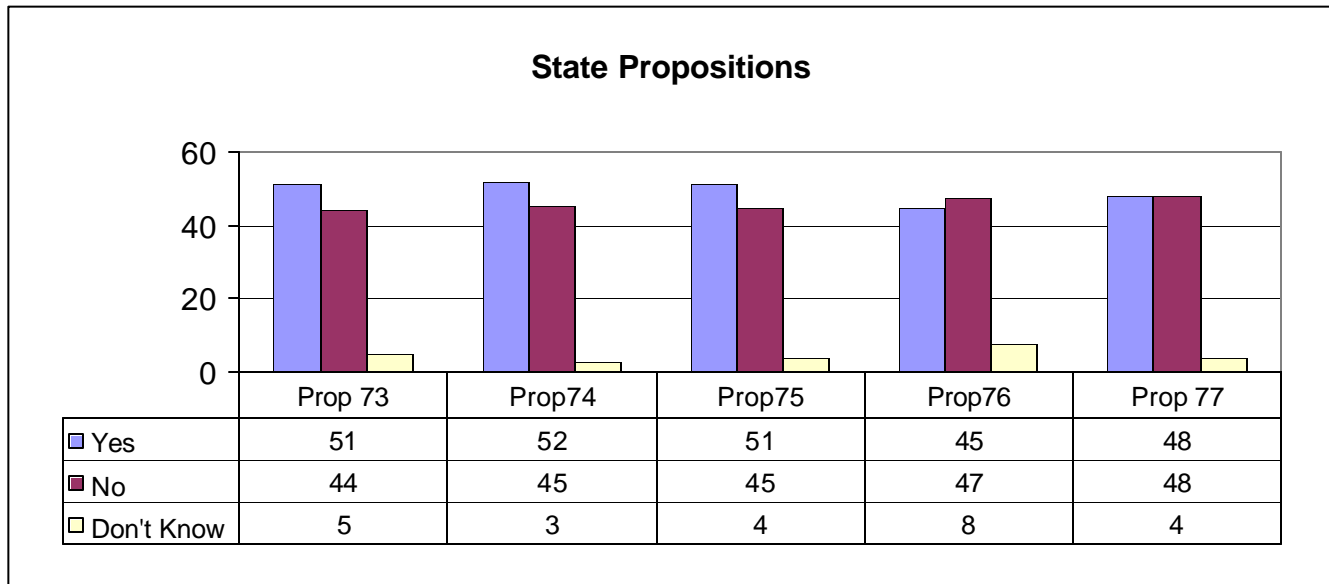


Donna Frye	44	53	47	45	36
Jerry Sanders	53	39	48	45	58
Don't Know	3	8	5	10	6

Among City of San Diego high-propensity registered voters, Proposition 73 (the “Waiting Period and Parental Notification Before Termination of Minor’s Pregnancy” initiative) leads 51% to 44% with 5% undecided.

Proposition 74, the “Public School Teachers Waiting Period for Permanent Status Dismissal” initiative, is leading 52% to 45% with 3% undecided.

Proposition 75, the “Public Employee Union Dues Restrictions on Political Contributions. Employee Consent Requirement” initiative is leading 51% to 45% with 4% undecided.



Proposition 76, the “State Spending and School Funding Limits” initiative, is behind 45% to 47% with 8% undecided.

Proposition 77, the “Redistricting Initiative”, is tied 48% to 48% with 4% undecided.

About the Survey

The Survey is a project of Datamar, Inc. Datamar, Inc. offers online tools for political candidates and committees that help organize the basic information for a successful campaign including: Surveys, Voter Contact Information, Voter Demographic Information, Legislative Races and Proposition Results. Datamar, also provides voter contact and GOTV phone services.

Findings are based on a telephone survey of 953 San Diego high-propensity registered voters. Registered voters polled are those who voted in the 2004 primary and general elections. These voters were interviewed on November 3rd, and 4th, 2005. Interviews took place using a proprietary algorithm to generate a random sample of voters. The sampling error for the total sample is +/- 3.2 percent at the 95 percent confidence level. The sampling error for subgroups is larger. Totals may not equal 100 due to rounding.

Surveys are available from our website at: www.datamar.com

DATAMAR, INC.

November 5, 2005

Survey Toplines

Sample size 953

+/- 3 percent sampling error

November 3, 4, 2005

High-propensity registered San Diego voters

Q1. Are you a registered voter in the City of San Diego?

Yes 100%

No

Don't Know

Q2. Voters in the City of San Diego will vote for mayor on November 8th. If this election for mayor were held today, for whom would you vote?

Donna Frye, councilmember/business owner 45%

Jerry Sanders, businessman/retired police chief 52%

Don't know 3%

Q3. Proposition 73 is the "Waiting Period and Parental Notification Before Termination of Minor's Pregnancy" initiative. It requires, with certain exceptions, a physician to notify the parent or legal guardian of a pregnant minor at least 48 hours before performing an abortion involving that minor. If the election were held today, would you vote yes or no on Proposition 73?

Yes 51%

No 44%

Don't know 5%

Q4. Proposition 74 is the "Public School Teachers Waiting Period for Permanent Status Dismissal" initiative. It increases length of time required before a teacher may become a permanent employee from two complete consecutive school years to five complete consecutive school years. If the election were held today, would you vote yes or no on Proposition 74?

Yes 52%

No 45%

Don't know 3%

Q5. Proposition 75 is the “Public Employee Union Dues, Restrictions on Political Contributions, Employee Consent Requirement” initiative. It prohibits the use by public employee labor organizations of public employee dues or fees for political contributions except with the prior consent of individual public employees each year on a specified written form. If the election were held today, would you vote yes or no on Proposition 75?

Yes	51%
No	45%
Don't know	4%

Q6. Proposition 76 is the “State Spending and School Funding Limits” initiative. It limits state spending to prior year's levels plus the average revenue growth of the previous years. It also changes the minimum school funding requirements under proposition 98, and eliminates repayment requirement when minimum funding is suspended. If the election were held today would you vote yes or no on Proposition 76?

Yes	45%
No	47%
Don't know	8%

Q7. Proposition 77 is the “Redistricting Initiative” It amends the process for redistricting California's Senate, Assembly, Congressional and Board of Equalization districts. It requires a panel of three retired judges, selected by legislative leaders, to adopt a new redistricting plan if measure passes, and after each national census. If the election were held today, would you vote yes or no on Proposition 77?

Yes	48%
No	48%
Don't know	4%

Q8. What is the likelihood of your voting in the November 8, 2005 special election -- are you extremely likely, very likely, somewhat likely, or not very likely at all to vote?

Extremely Likely	96%
Very Likely	2%
Somewhat Likely	1%
Not Very Likely	1%

Q9. Which of the following best describes you politically?

Very liberal	15%
Somewhat liberal	21%
Middle-of-the-road	25%
Somewhat conservative	23%
Very conservative	13%
Don't know	3%

Q10. On social issues, what would you say best describes you?

Very liberal	16%
Somewhat liberal	23%
Middle-of-the-road	25%
Somewhat conservative	21%
Very conservative	13%
Don't know	2%

Q11. On fiscal issues, what would you say best describes you?

Very liberal	8%
Somewhat liberal	16%
Middle-of-the-road	27%
Somewhat conservative	27%
Very conservative	19%
Don't know	3%

Now, just a few final questions for statistical purposes only --

Q12. Are you?

Male	48%
Female	52%

Q13. What is your age, please?

18-24	3%
25-34	7%
35-44	12%
45-54	18%
55-64	21%
65 or over	39%

Q14. What is the highest level of education you have completed?

Some high school	2%
Graduated high school	8%
Technical/vocational	3%
Some college	22%
Graduated college	41%
Graduate/professional School	24%

Q15. In what political party are you registered to vote?

Democrat	44%
Republican	43%
Another party	6%
No party registration	7%

Q16. Are you or is anyone in your household a member of a labor union, such as trade unions, service employee unions, public employee unions, and teachers unions?

Yes	21%
No	76%
Don't know	3%

Q17. What do you consider to be your race/ethnic group?

White	76%
Black/African-American	4%
Hispanic/Latino	11%
Asian/Pacific Islander	3%
Other racial/ethnic group	6%