

Datamar Survey

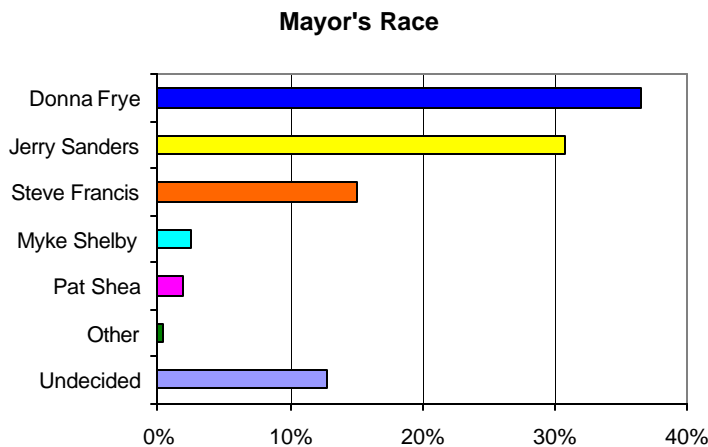
Date: June 27, 2005

Contact: Raul Furlong
619-579-8244

Frye and Sanders Lead Race Francis Jumps Into Third

Voters Think City Management Broke The Law

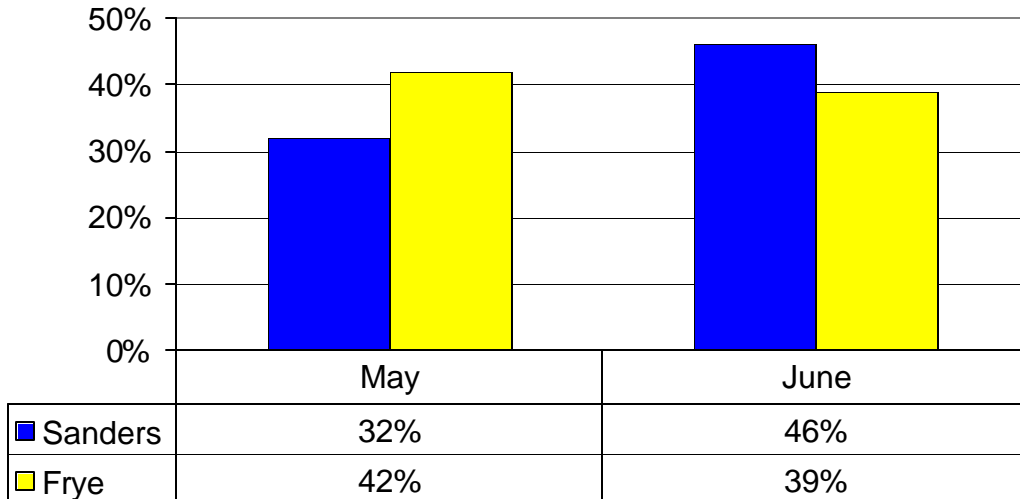
San Diego – Councilmember Donna Frye, 37%, and Jerry Sanders, 31%, have a solid lead over the rest of the candidates in the race to be San Diego’s next Mayor. Steve Francis has moved into a strong third place with 15% support. Myke Shelby, 3%, and Pat Shea, 2%, round out the field of those candidates polling higher than 1%. Undecided voters account for 13%.



Donna Frye	37%
Jerry Sanders	31%
Steve Francis	15%
Myke Shelby	3%
Pat Shea	2%
Other	0.4%
Undecided	13%

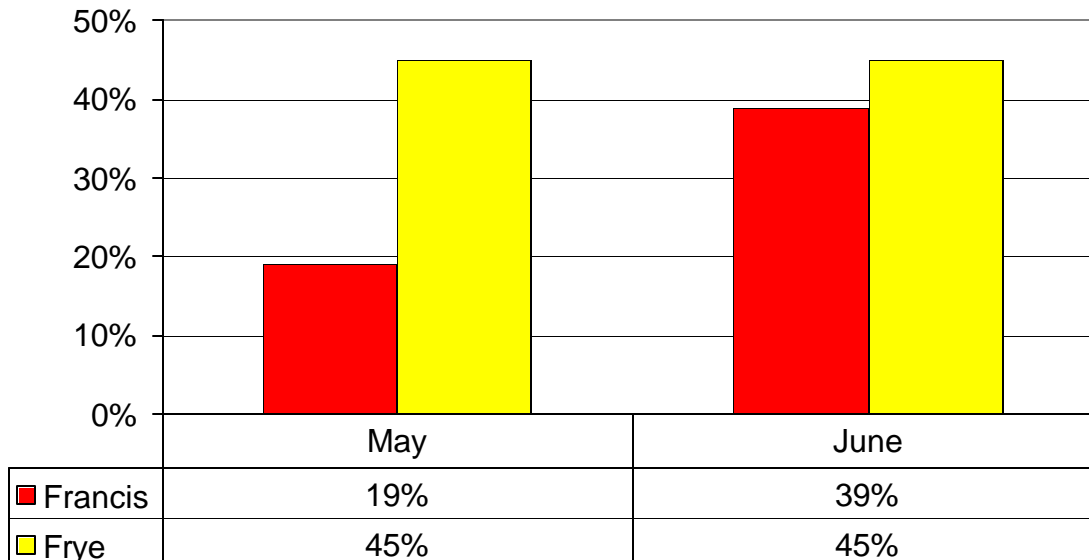
In a head-to-head competition between Jerry Sanders and Donna Frye, Sanders has a lead of 46% to 39% for Frye. Sanders has moved up substantially from our May match-up, which had Frye leading 42% to Sanders 32%.

Head-to-Head Sanders vs. Frye



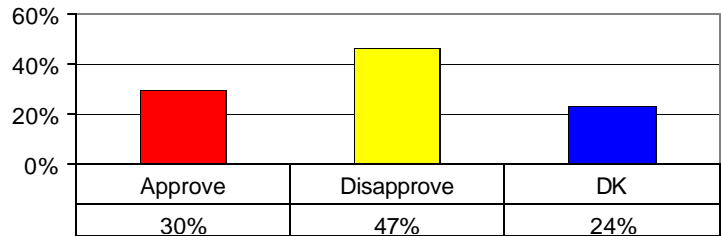
Francis has also improved dramatically versus Frye. In May Francis trailed badly 45% to 19%, a 26-point spread. Currently he is only trailing by 6 points 45% to 39%. Frye has remained in the mid-to-low forties in these head-to-head match-ups.

Head-to-Head Francis vs. Frye



Pat Shea’s message of filing for bankruptcy resonates with 30% of the voters. Seventeen percent definitely approve of the city filing for bankruptcy while 13% somewhat approve. Twenty-eight percent definitely disapprove of the city filing for bankruptcy, and 19% somewhat disapprove.

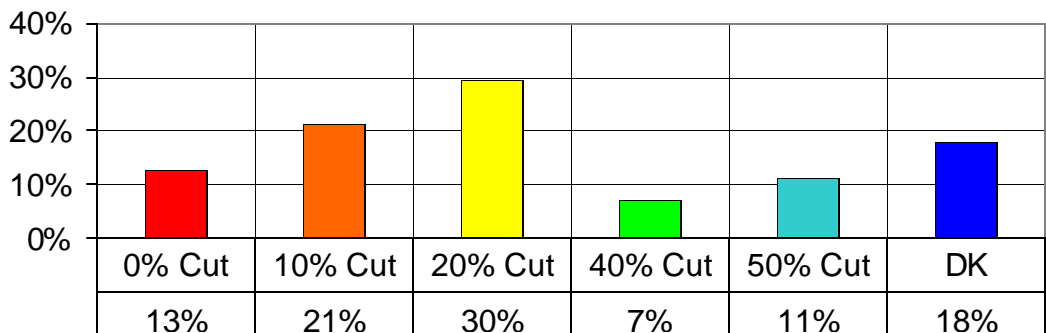
Q4. A candidate in the Mayor's race has recommended that the city file for bankruptcy. Do you approve or disapprove of such an action?



Q4. A candidate in the Mayor’s race has recommend that the city file for bankruptcy. Do you approve or disapprove of such an action?		
Definitely Approve	17%	30%
Somewhat Approve	13%	
Somewhat Disapprove	19%	47%
Definitely Disapprove	28%	
DK	24%	24%

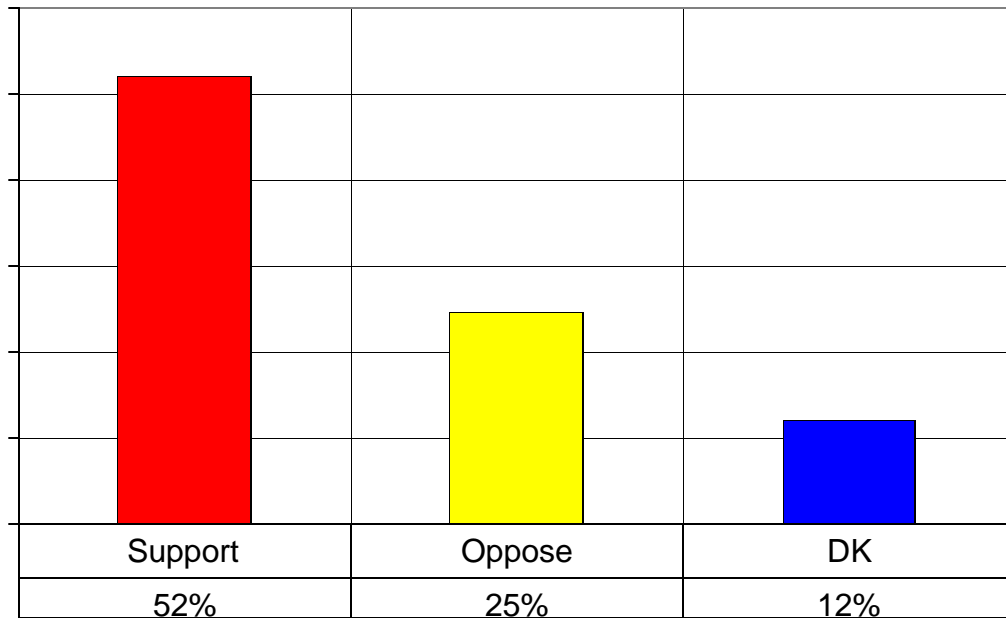
Steve Francis’ recommendation that the Councilmembers’ budgets be cut by 20% seems to resonate with the voters. Thirty percent of the voters believe that the Council budgets should be cut 20%, 7% want a 40% cut and 11% want a whopping 50% cut. Only 13% believe that there should be no cut in the Council office budgets.

Q5. In the current Mayor's race the idea of cutting the Councilmembers budget has been suggested. I will ask you to recommend a percent that you think the Councilmembers budget should be cut.



The voters support the concept of contracting out City services to save money. Over 50% either strongly support or somewhat support contracting out City services while only 32% strongly oppose or somewhat oppose the idea. This could give a Strong Mayor wide latitude to reduce the City's budget for next year.

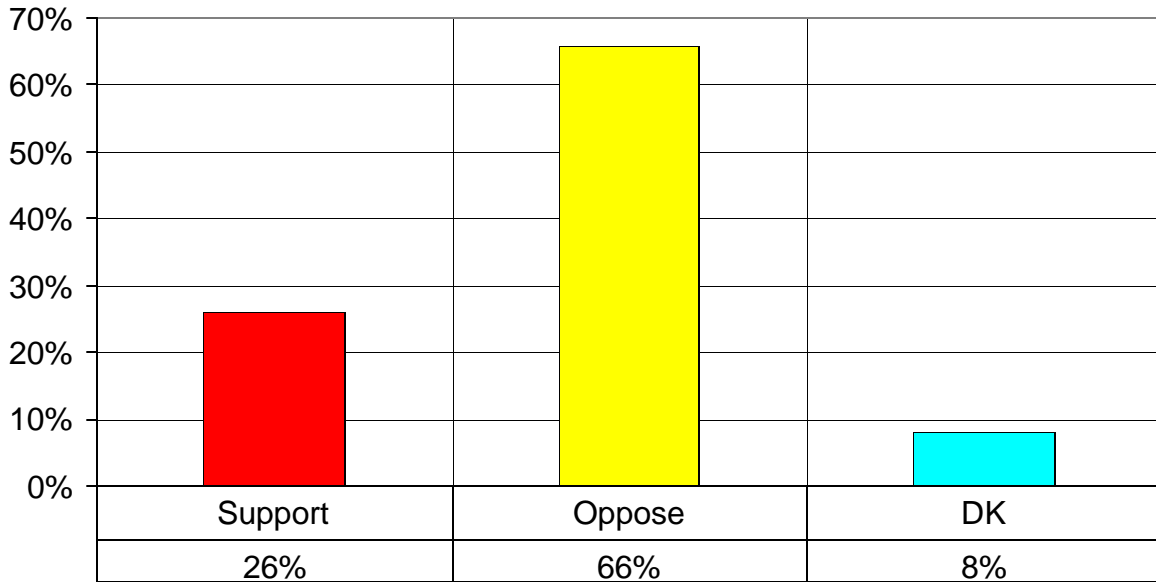
Q6. Several Candidates in the Mayor's race have recommended contracting out city services to help save money. Do you support or oppose such an idea?



Q.6 Several candidates in the Mayor's race have recommended contracting out city services to help save money. Do you support or oppose such an idea?		
Strongly Support	27%	52%
Somewhat Support	25%	
Somewhat Oppose	12%	32%
Strongly Oppose	20%	
DK	16%	16%

One of the proposals brought forth by the City Manager to help alleviate the City’s budget problems is charging a household trash collection fee. This idea is opposed by 66% of the voters in San Diego, and only supported by 26%.

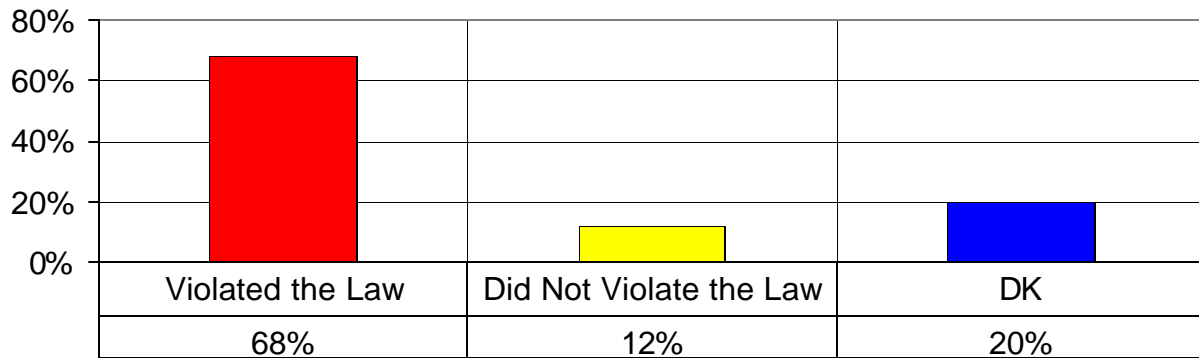
Q7 The San Diego City Manager has recommended a trash pick up fee of over \$120 a year to be assessed to single family households. Do you support or oppose such a fee?



Q7. The San Diego City Manager has recommended a trash pick up fee of over \$120 a year to be assessed to single-family households. Do you support or oppose such a fee?		
Strongly Support	16%	26%
Somewhat Support	10%	
Somewhat Oppose	28%	66%
Strongly Oppose	38%	
DK	8%	8%

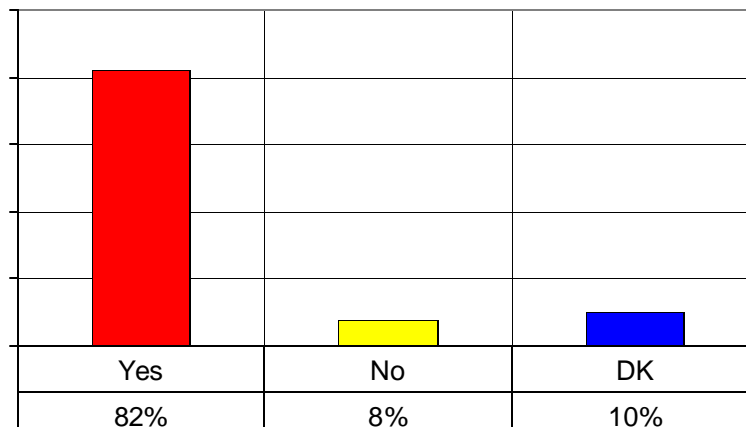
In past polls we asked if the voters felt that the Mayor and Council had committed a crime in regards to the pension scandal. This month we asked if they felt the employees of the City Manager had committed a crime. A resounding 68% feel that the Manager’s employees have violated the law in regards to the under-funding of the pension. Only 12% believe that the employees did not violate the law. “Currently there is minimal trust among the citizens of San Diego in regards to city government. Both elected and administrative officials have been indicted. It will be exceedingly difficult to regain the trust of the people in the short-term,”

Q8. Do you think that employees in the San Diego City Managers office violated the law in recommending the underfunding of the City of San Diego Pension?



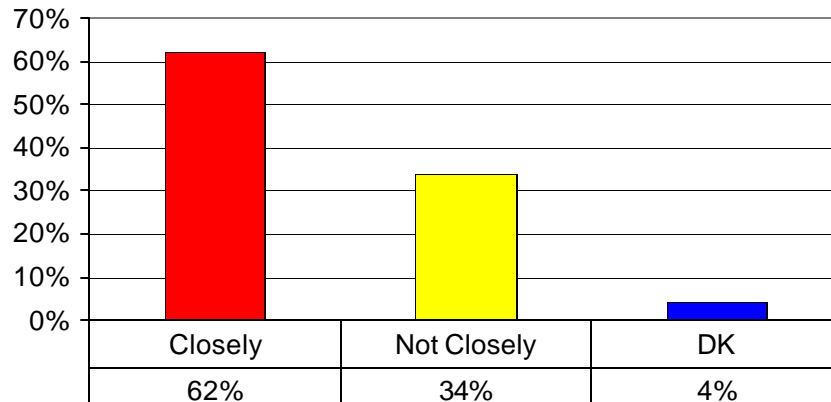
Eighty two percent of the voters want the San Diego Retirement Board to release the documents regarding the pension problems. Only 8% think the Retirement Board should not release the documents.

Q9. Recently the San Diego Retirement Board voted not to release documents regarding the pension problems. Do you think that the Retirement Board should release the information?



The upcoming Mayoral election has generated strong interest among the voters, with 62% saying that they are following the news about the candidates very closely or fairly closely. Only 33% are not following the contest.

Q10. How closely are you following the news about candidates for the upcoming Mayoral Election -- Very Closely, Fairly Closely, Not too Closely, Not at all



About the Survey

The Survey is a project of Datamar, Inc. Datamar offers online tools for political candidates and committees that help organize the basic information for successful campaigns including Surveys, Voter Contact Information, Voter Demographic Information, Legislative Races and Proposition Results.

Findings are based on a telephone survey of 1099 San Diego high propensity registered voters. Registered voters polled were those who voted in the 2004 primary and general elections. These registered voters were interviewed June 22 through June 24, 2005. Interviews took place using a computer-generated random sample of telephone numbers. The sampling error for the total sample is +/- 3.2 percent at the 95 percent confidence level. The sampling error for subgroups is larger.

Surveys are available from our website at: www.datamar.com

DATAMAR, INC.
June 26, 2005 Survey Toplines

Sample size 1099; +/- 3.2%

June 22, 23, 24, 2005

High Propensity Registered San Diego Voters

Q1. If the July 26th mayoral election were being held today, would you vote for?

37% Donna Frye, Councilmember/Business Owner
31% Jerry Sanders, Businessman/Retired Police Chief
15% Steve Francis, Businessman
3% Myke Shelby, Motorcycle Dealership Owner
2% Pat Shea, Municipal Restructuring Counsel/Businessman
0.4% Other
13% Undecided

Q2. If the runoff election were between Donna Frye and Jerry Sanders, whom would you vote for?

39% Donna Frye
46% Jerry Sanders
16% DK

Q3. If the runoff election were between Donna Frye and Steve Francis, whom would you vote for?

45% Donna Frye
39% Steve Francis
17% DK

Q4. A candidate in the Mayor's race has recommended that the city file for bankruptcy. Do you approve or disapprove of such an action?

17% Definitely approve
13% Somewhat approve
19% Somewhat disapprove
28% Definitely disapprove
24% DK

Q5. In the current Mayor's race, the idea of cutting the councilmembers' budget has been suggested. I will ask you to recommend a percent that you think the councilmembers' budgets should be cut.

13% 0% Cut
21% 10% Cut
30% 20% Cut
7% 40% Cut
11% 50% Cut

18% DK.

Q6. Several candidates in the Mayor's race have recommended contracting out city services to help save money. Do you support or oppose such an idea?

27% Strongly support
25% Somewhat support
12% Somewhat oppose
20% Strongly oppose
16% DK

Q7. The San Diego City Manager has recommended a trash pick-up fee of over \$120 a year be assessed to every single-family household. Do you support or oppose such a fee?

16% Strongly support such a fee
10% Somewhat support such a fee
28% Somewhat oppose such a fee
38% Strongly oppose such a fee
8% DK

Q8. Do you think that employees in the San Diego City Manager's office violated the law in recommending the under-funding of the City of San Diego pension plan?

68% I think that employees violated the law
12% I think that employees did not violate the law
20% DK

Q9. Recently the San Diego Retirement Board voted not to release documents regarding the pension scandal. Do you think that the retirement board should release the information?

82% Yes
7% No
10% DK

Q10. How closely are you following news about candidates for the upcoming Mayoral election—very closely, fairly closely, not too closely, or not at all closely?

27% Very closely
35% Fairly closely
27% Not too closely
7% Not at all closely
4% DK

* Percentiles may not equal 100% because of rounding.