



California Statewide Health Care Survey

Date: February 20, 2007

Contact: Raul Furlong

619-579-8244

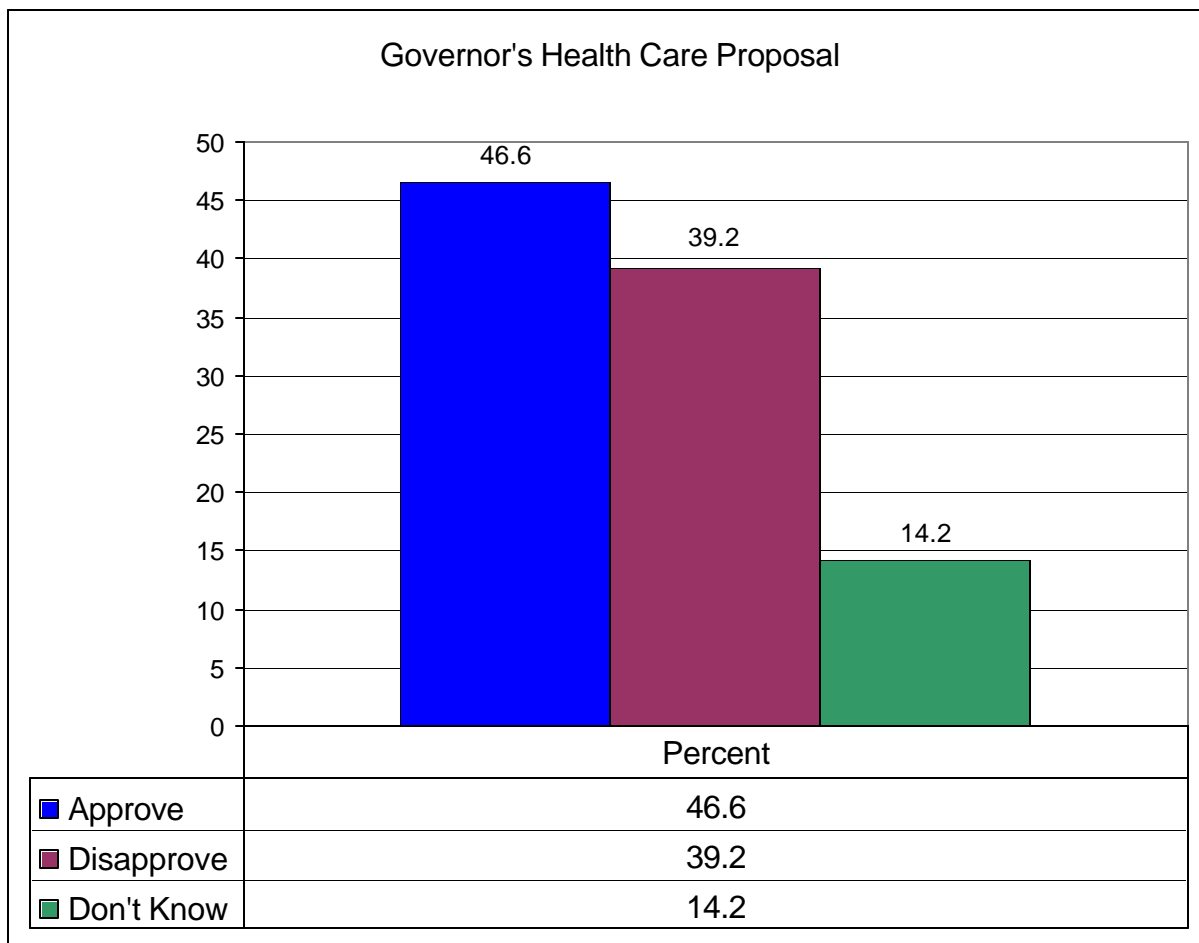
www.datamar.com

Sample size 928

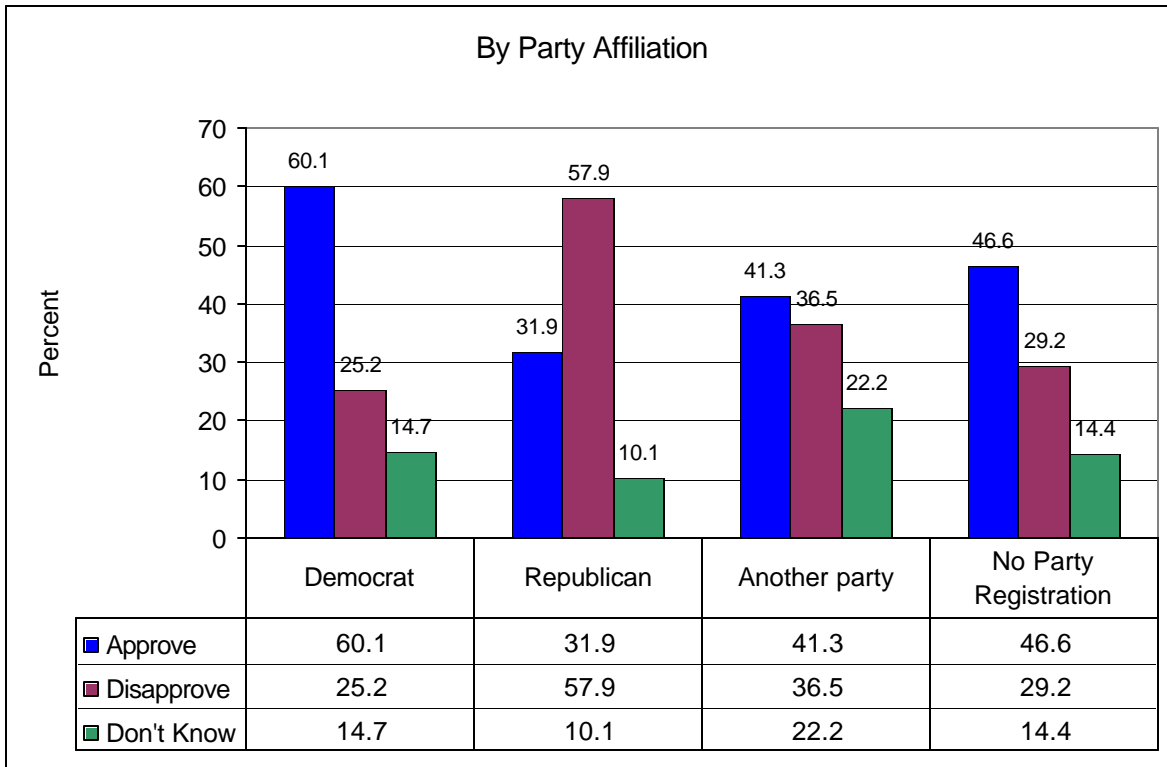
+/- 3.2 percent sampling error

February 13 – 16, 2007

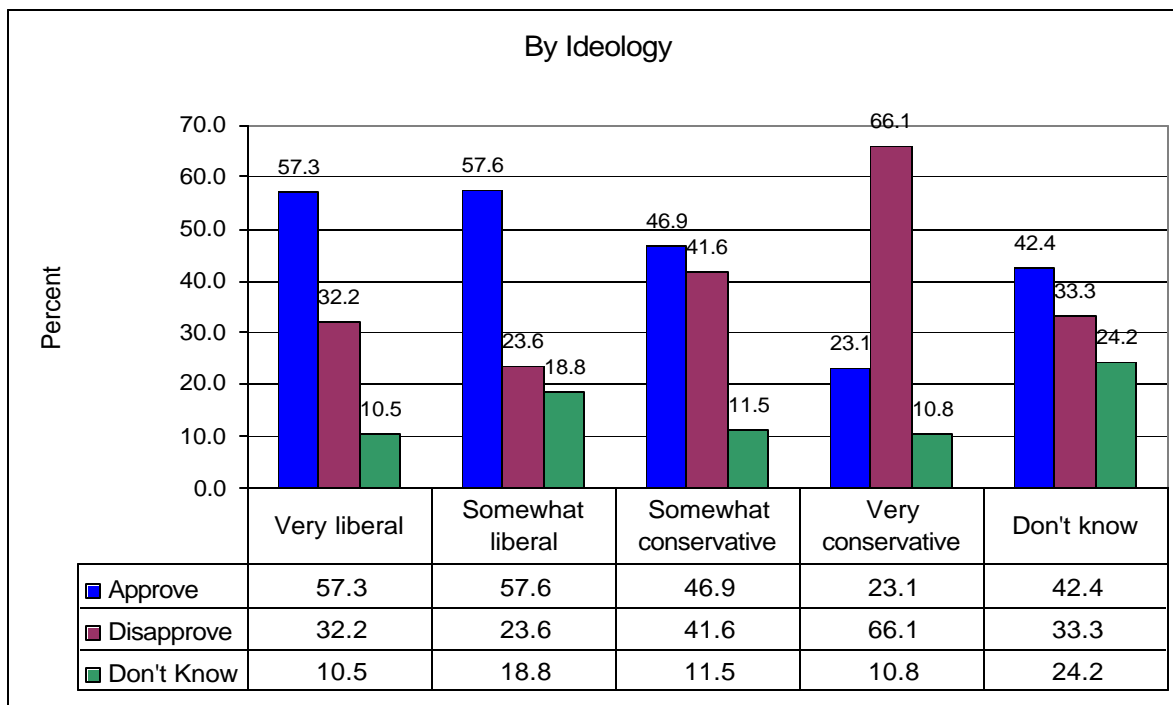
San Diego – A poll released today by Datamar Inc., shows that Governor Arnold Schwarzenegger’s Health Care proposal has an overall approval rating by voters of 46.6% to 39.2% disapproval and 14.2% undecided.



When the Governor's health care proposal is separated by party affiliation, The Democrats approve it by 60.1%, while Republicans disapprove of it by 57.9%.

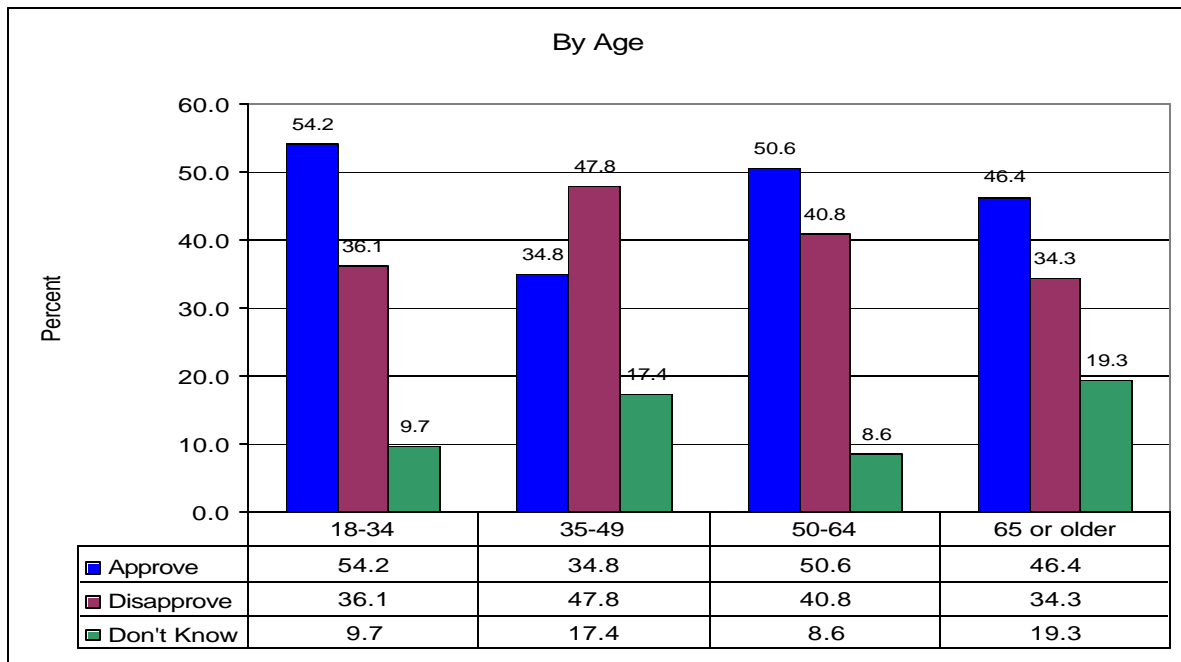


When the Governor's proposal is viewed from an ideological perspective, the very liberal, 57.3%, and the somewhat liberal, 57.6%, share almost identical support for the proposal, however, the support starts to decline with the somewhat conservative, 46.9%, and continues to drop with the very conservative at 23.9%.

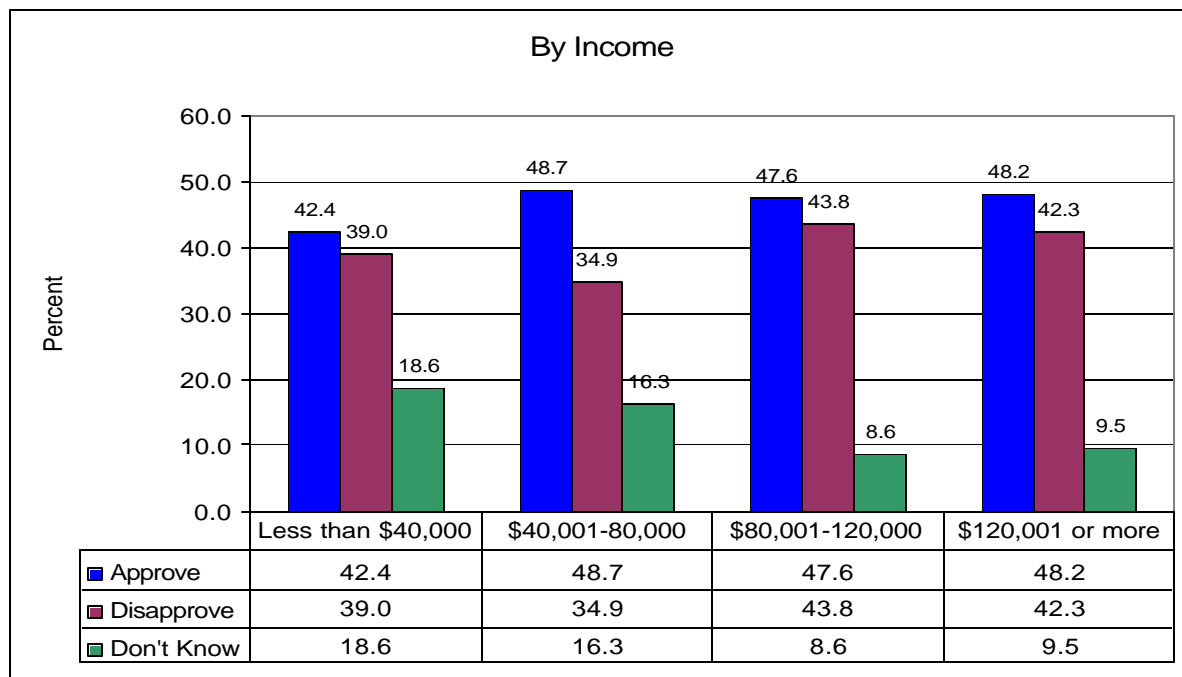


There also exists an approval/disapproval division within age groups, with the 18-34 year-olds supporting the Governor's proposal by 54.2%, the 50-64 group in support by 50.6% and the over 65 year-olds in support by 46.4%.

The 35-49 year-olds are the only group that disapproves of the proposal, 47.8%, approves it by 34.8% with 17.4 undecided.

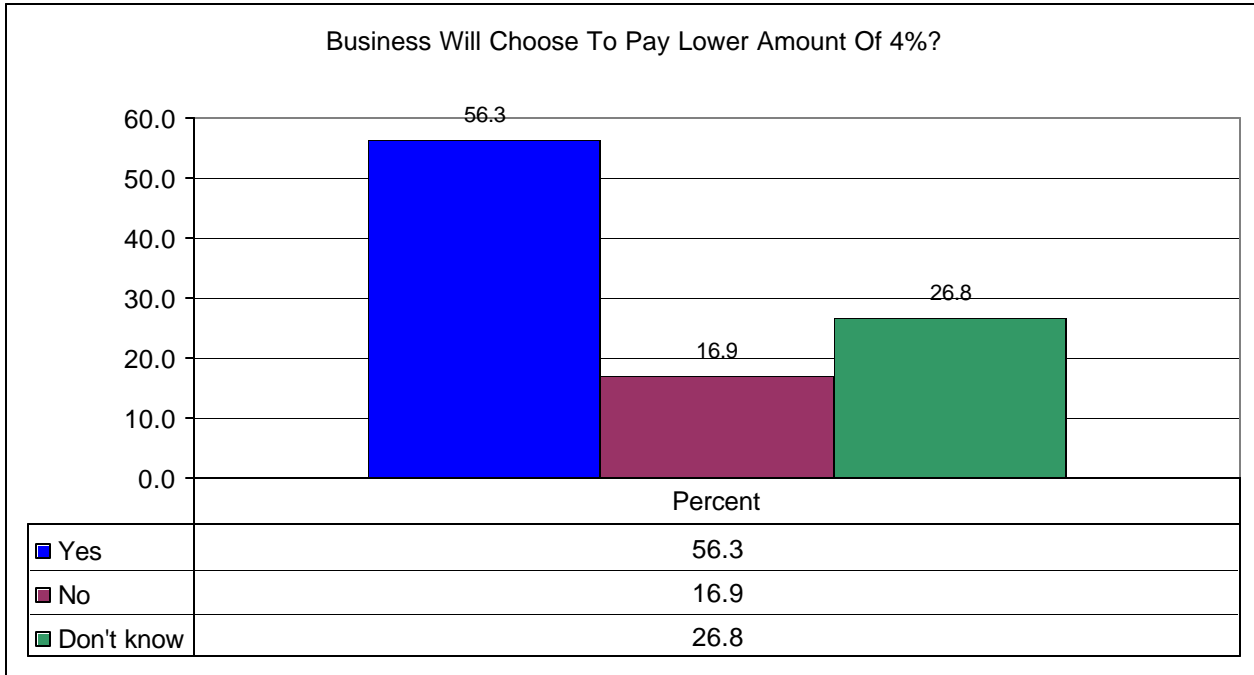


The Governor enjoys a moderate approval rating for his health care plan across income levels.

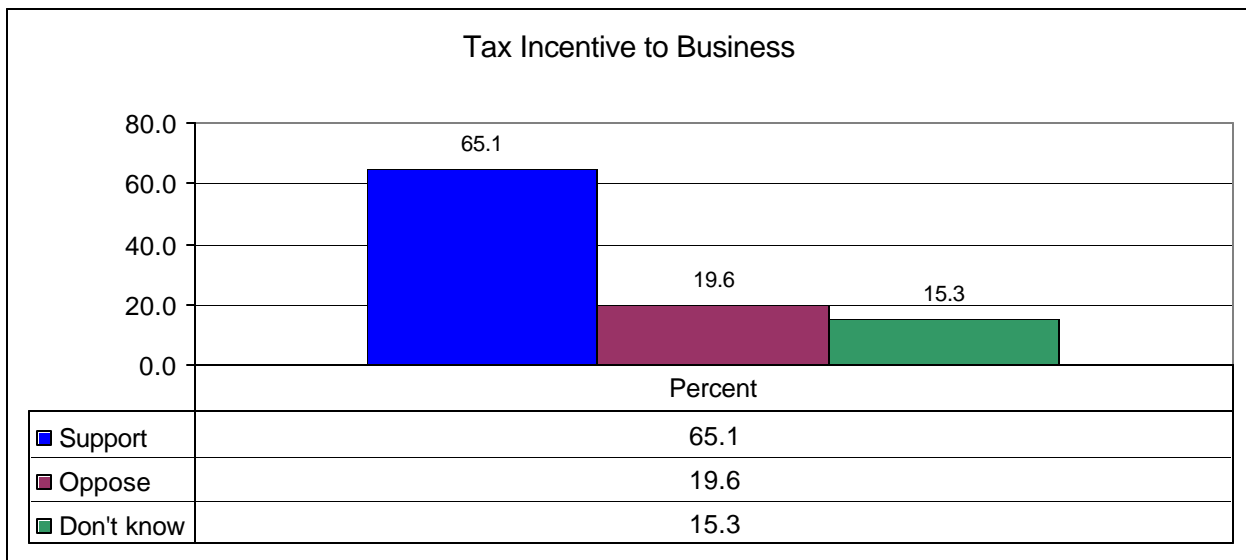


Respondents were asked: Governor Schwarzenegger is proposing a health care plan that requires companies with 10 or more employees to provide health insurance or pay an amount equal to 4% of their payroll to the state. Some experts say that businesses providing employees with health insurance now pay about 8%. If the governor's plan takes effect, do you think employers would stop providing employee health insurance and instead pay the lower amount proposed by the governor's plan?

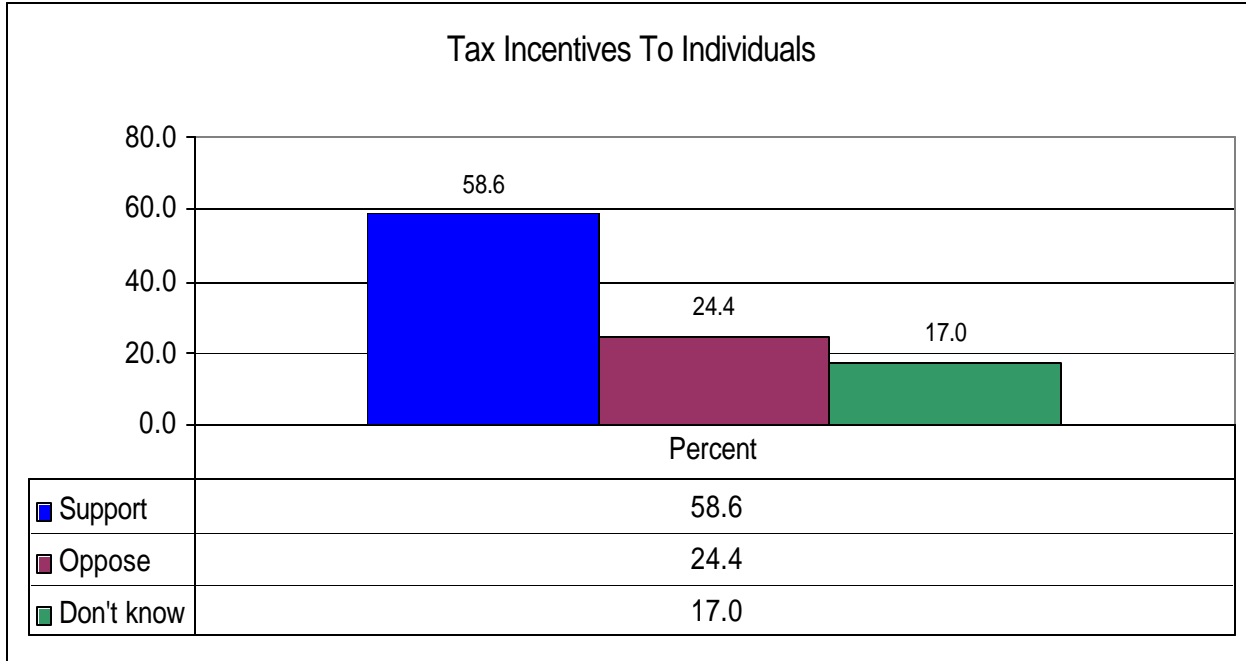
Voters believe that when businesses are given an option of paying 4% versus 8%, the businesses will pay the lower amount of 4% by 56.3% versus 16% who believe businesses will continue to pay the larger amount of 8% of their payroll.



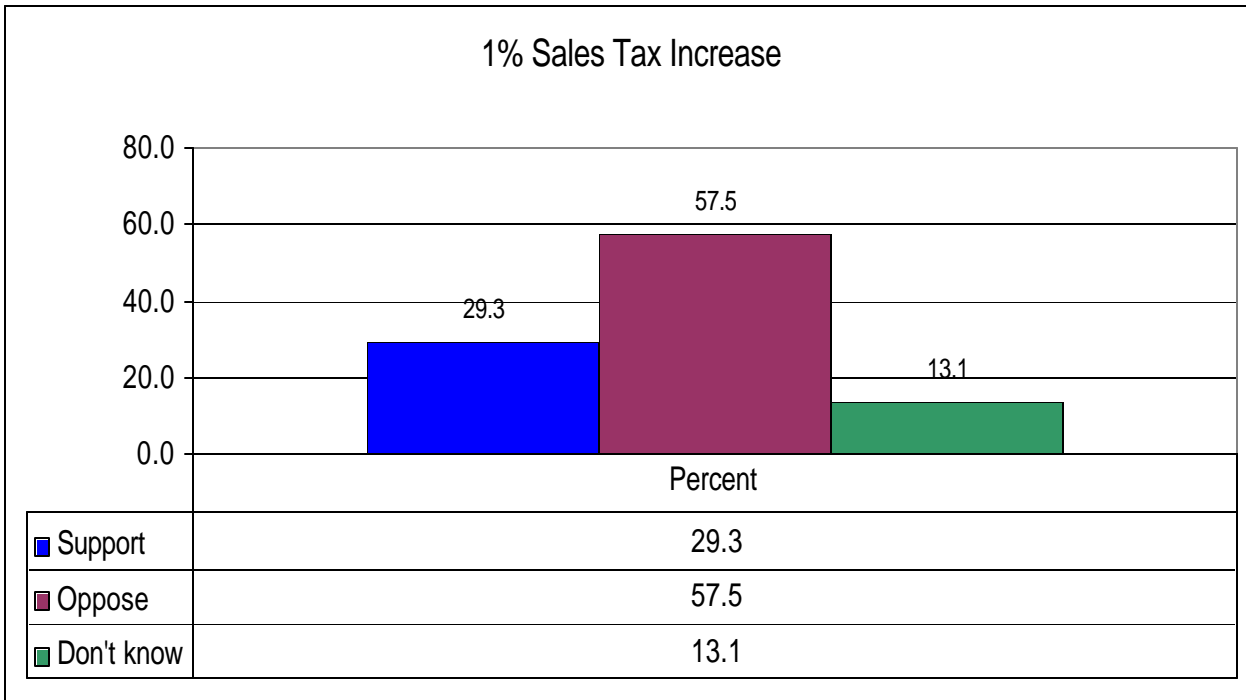
Voters give high support ratings, 65.1%, to giving businesses tax incentives to provide health insurance for their employees with only 19.6% opposing it and 15.3% undecided.



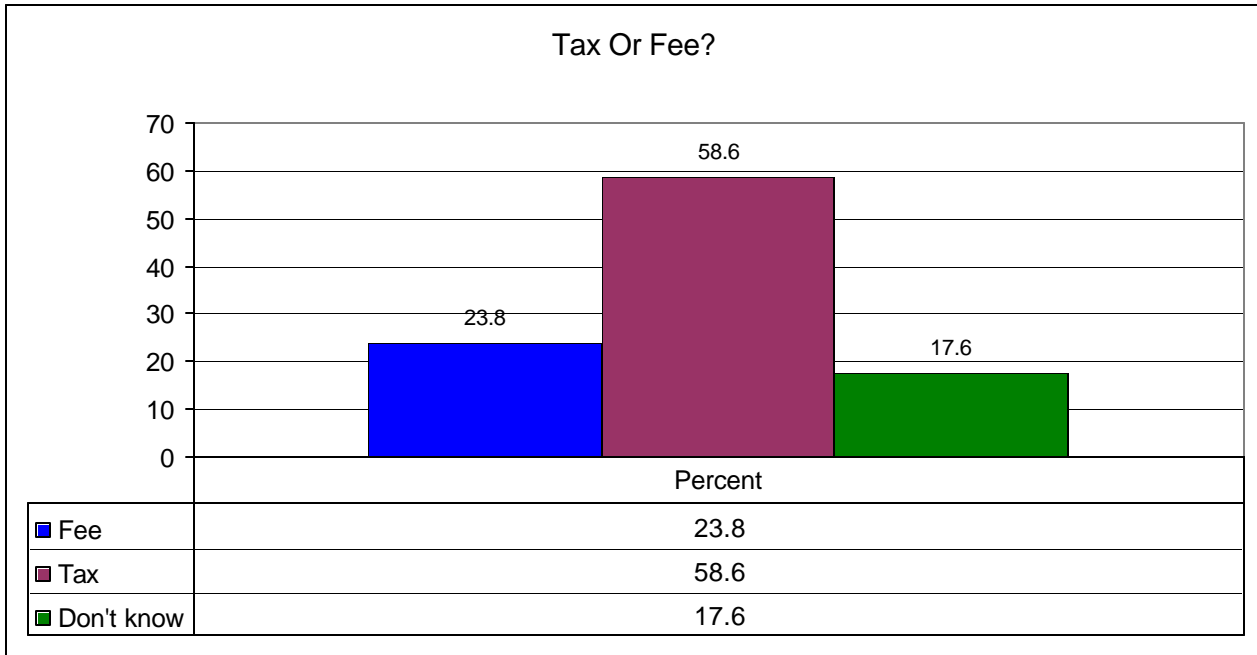
Similarly, voters support, 58.6%, giving individuals tax incentives or tax credits to purchase their own health insurance with 24.4% opposing it and 17% undecided.



Would voters be willing to pay a 1% sales tax increase to pay for the Governor's health care plan? Voters, by a large margin, 57.5%, oppose the 1% sales tax increase.



Voters believe that the Governor’s plan to require businesses to pay 4% of their payroll in lieu of health insurance is a tax by 58.6%, while 23.8% believe it’s a fee.



Sample size 928
 +/- 3.2 percent sampling error
 February 13 – 16, 2007

Methodology: Findings are based on a February 13 – 16, 2007 survey using a comprehensive predictive model of “likely” voters, based on election cycles and other factors of voters in California. The survey was conducted using an automated telephone dialer and the voice of a professional announcer. A Datamar proprietary algorithm was used to generate random samples of voters for calling. The margin of error for the total sample is +/- 3.2 percent at the 95 percent confidence level.

Where necessary, responses were weighted according to age, gender, and political party.



California Health Care Statewide Survey Toplines

Crosstabs are available for each individual question in the survey.

February 20, 2007 California Survey

Sample size 928
+/- 3.2 percent sampling error
February 13 – 16, 2007

Q1. Are you registered to vote in California?

	Percent
Yes	100.0

Q2. Are you registered as Democrat, Republican, another party, or as “no party registration”?

	Percent
Democrat	43.2
Republican	36.1
Another party	13.6
No party registration	7.1
Total	100.0

Q3. Are you?

	Percent
Male	48.9
Female	51.1
Total	100.0

Q4. What is your age, please?

	Percent
18-34	7.8
35-49	17.3
50-64	37.5
65 or older	37.4
Total	100.0

Q5. What is the highest level of education you have completed?

	Percent
High school graduate or less	13.9
Some college/trade school	32.5
Graduated college or more	53.6
Total	100.0

Q6. Are you or is anyone in your household a member of a labor union, such as trade union, service employee union, public employee union, or teachers union?

	Percent
Yes	31.1
No	66.8
Don't know	2.0
Total	100.0

Q7. What do you consider to be your ethnic group?

	Percent
White non-hispanic	81.5
Hispanic/latino	8.4
Black/African-American	3.9
Asian/other	6.3
Total	100.0

Q8. What is your marital status?

	Percent
Married	68.3
Seaprated/divorced/widowed	21.0
Never married	10.7
Total	100.0

Q9. What is your household income?

	Percent
Less than \$40,000	29.0
\$40,001-80,000	33.6
\$80,001-120,000	22.6
\$120,001 or more	14.8
Total	100.0

Q10. Which of the following best describes you politically?

	Percent
Very liberal	15.4
Somewhat liberal	29.2
Somewhat conservative	28.2
Very conservative	20.0
Don't know	7.1
Total	100.0

Q11. What do you think is the most important problem facing California today? Education, immigration, the environment, taxes, health care, or other?

	Percent
Education	13.8
Immigration	42.9
Environment	11.9
Taxes	7.9
Health care	17.5
Other	4.3
Don't know	1.8
Total	100.0

Q12. Overall, do you approve or disapprove of the way Arnold Schwarzenegger is handling his job as Governor of California?

	Percent
Approve	55.5
Disapprove	30.8
Don't know	13.7
Total	100.0

Q13. Overall, do you approve or disapprove of the way the California Legislature is handling its job?

	Percent
Approve	26.7
Disapprove	55.8
Don't know	17.5
Total	100.0

Q14. When it comes to the tough choices involved in the state budget, both in deciding how much Californians should pay in taxes and how to fund state programs, who do you trust more - Governor Schwarzenegger, or the state legislature?.

	Percent
Governor	45.0
State legislature	33.9
Neither	16.5
Don't know	4.5
Total	100.0

Let's turn our attention to questions about health insurance.

Q15. Do you have company provided health insurance right now?

	Percent
Yes	59.2
No	40.8
Total	100.0

Q16. Governor Schwarzenegger is proposing a health care plan that requires companies with 10 or more employees to provide health insurance or pay an amount equal to 4% of their payroll to the state. Do you approve or disapprove of the governor's proposal?

	Percent
Approve	46.6
Disapprove	39.2
Don't know	14.2
Total	100.0

Q17. How many employees should a business have before it should be required by law to provide health insurance to its employees, or should businesses not be required by law to provide health insurance to its employees?

	Percent
One employee	9.2
2-10	24.0
11-50	25.0
More than 50	10.6
Should not be required	23.7
Don't know	7.5
Total	100.0

Q18. Governor Schwarzenegger is proposing a health care plan that requires companies with 10 or more employees to provide health insurance or pay an amount equal to 4% of their payroll to the state. Some experts say that businesses providing employees with health insurance now pay about 8%. If the governor's plan takes effect, do you think employers would stop providing employee health insurance and instead pay the lower amount proposed by the governor's plan?

	Percent
Yes	56.3
No	16.9
Don't know	26.8
Total	100.0

Q19. In lieu of implementing the governor's health care plan, would you support or oppose a law that would give businesses tax incentives to provide health insurance for their employees?

	Percent
Support	65.1
Oppose	19.6
Don't know	15.3
Total	100.0

Q20. In lieu of implementing the governor's health care plan, would you support or oppose a law that would give individuals tax incentives or tax credits to purchase their own health insurance?

	Percent
Support	58.6
Oppose	24.4
Don't know	17.0
Total	100.0

Q21. Would you support or oppose a 1% sales tax increase to pay for the governor's health care plan?

	Percent
Support	29.3
Oppose	57.5
Don't know	13.1
Total	100.0

Q22. Governor Schwarzenegger calls his plan to require businesses to pay 4% of their payroll in lieu of health insurance a *fee*, others call it a tax. In your opinion, is this a fee or a tax?

	Percent
Fee	23.8
Tax	58.6
Don't know	17.6
Total	100.0

Turning our attention to electoral politics

Q23. Do you approve or disapprove of the California State Legislature changing the 2008 presidential primary election from June to February?

	Percent
Approve	48.1
Disapprove	30.0
Don't know	22.0
Total	100.0